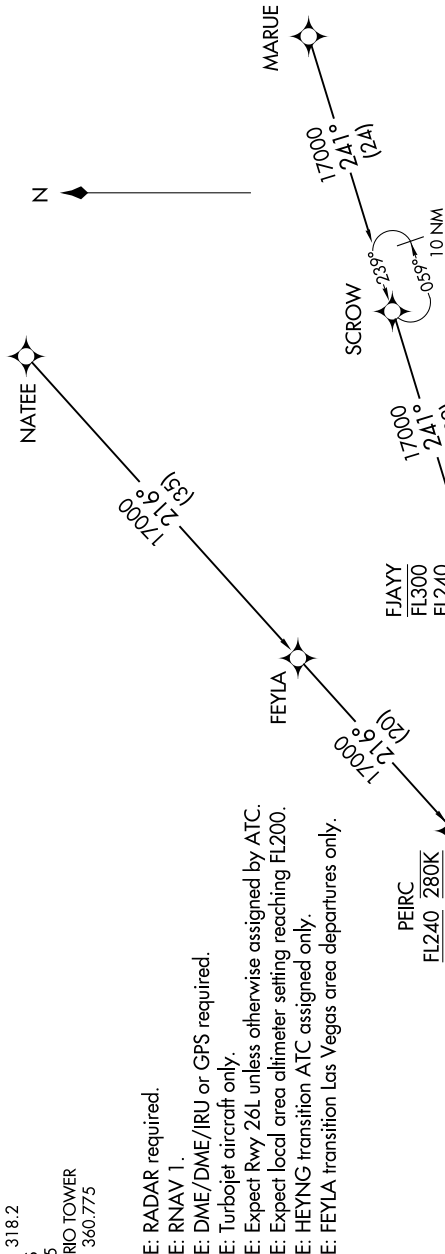


SW-3, 07 AUG 2025 to 04 SEP 2025

SOCAL APP CON
127.0 318.2
D-ATIS
124.25
ONTARIO TOWER
120.6 360.775

- NOTE: RADAR required.
- NOTE: RNAV 1.
- NOTE: DME/DME/IRU or GPS required.
- NOTE: Turbojet aircraft only.
- NOTE: Expect local area altimeter setting FL200.
- NOTE: HEYNG transition ATC assigned only.
- NOTE: FEYLA transition Las Vegas area departures only.



NOTE: Chart not to scale.

- FEYLA TRANSITION (FEYLA.JCKIE2)
- HEYNG TRANSITION (HEYNG.JCKIE2)
- MARUE TRANSITION (MARUE.JCKIE2)
- NATEE TRANSITION (NATEE.JCKIE2)

(CONTINUED ON FOLLOWING PAGE)

JCKIE
FL190
17000
See following
page for
arrival route.

SW-3, 07 AUG 2025 to 04 SEP 2025