

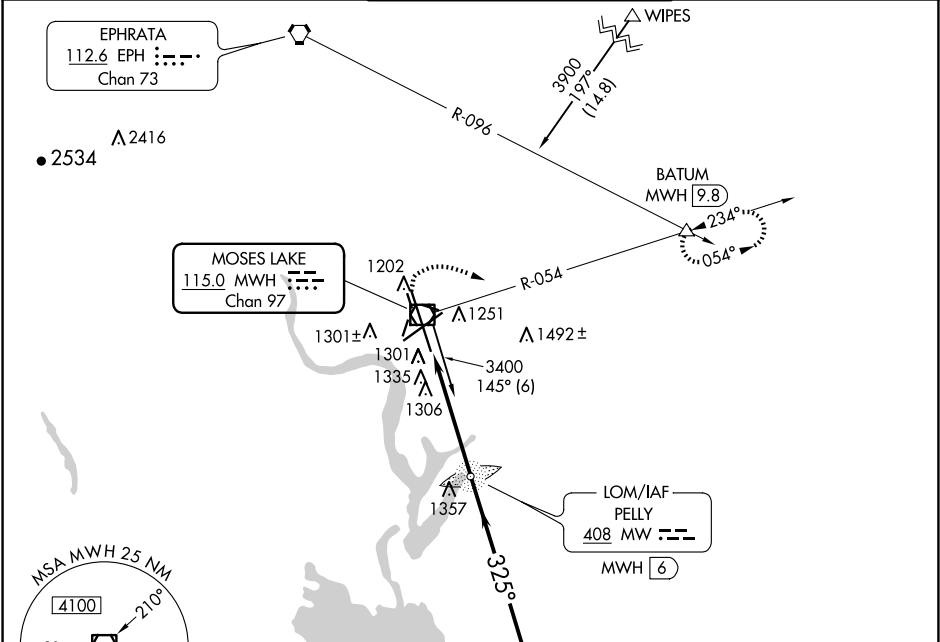


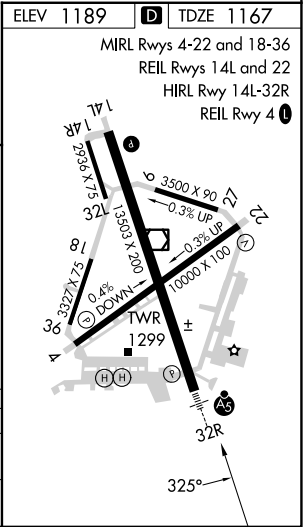
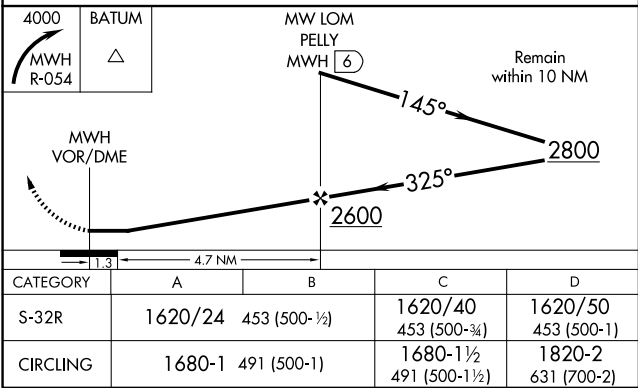
VOR/DME MWH	APP CRS	Rwy Idg	13492
115.0	325°	TDZE	1167
Chan 97		Apt Elev	1189

VOR RWY 32R  
GRANT COUNTY INTL (MWH)

				MISSED APPROACH: Climbing right turn to 4000 via MWH R-054 to BATUM INT/MWH 9.8 DME and hold.	
ATIS	GRANT COUNTY APP CON ★	GRANT COUNTY TOWER ★		GND CON	UNICOM
119.05	126.4 379.95	118.25 (CTAF) 257.8 (EAST) 128.0 257.8 (WEST)		121.9	122.95



ADF or DME REQUIRED



NW-1, 07 AUG 2025 to 04 SEP 2025

NW-1, 07 AUG 2025 to 04 SEP 2025