

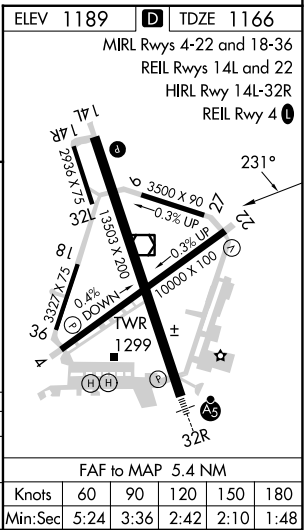
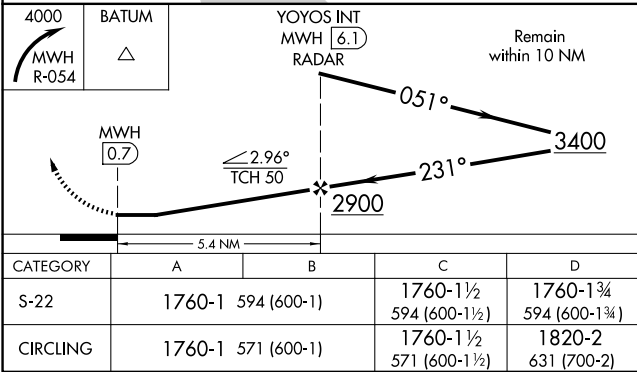
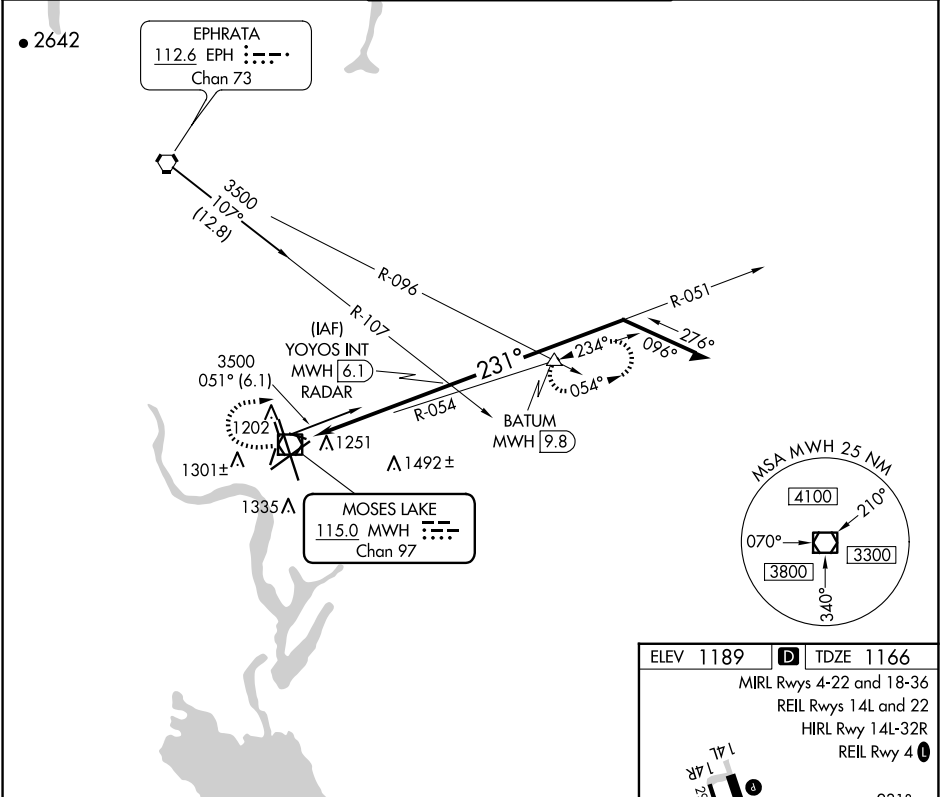
VOR/DME MWH	APP CRS	Rwy Idg	10000
115.0	231°	TDZE	1166
Chan 97		Apt Elev	1189

VOR RWY 22

GRANT COUNTY INTL (MWH)

MISSED APPROACH: Climbing right turn to 4000 via MWH R-054 to BATUM INT/MWH 9.8 DME and hold.

ATIS	GRANT COUNTY APP CON ★	GRANT COUNTY TOWER ★	GND CON	UNICOM
119.05	126.4 379.95	118.25 (CTAF) 257.8 (EAST) 128.0 257.8 (WEST)	121.9	122.95



NW-1, 07 AUG 2025 to 04 SEP 2025

NW-1, 07 AUG 2025 to 04 SEP 2025