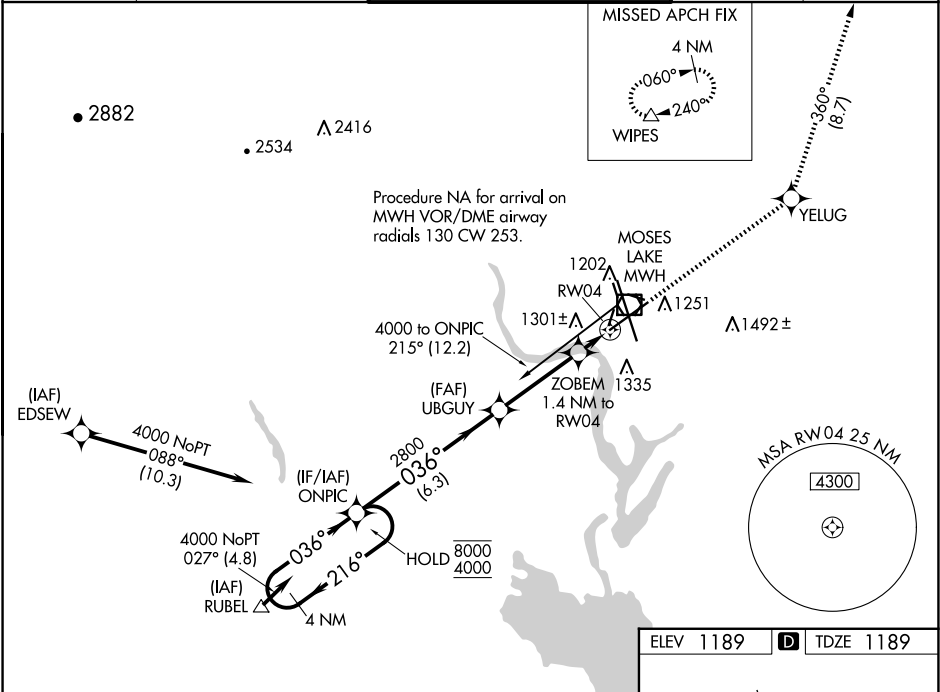


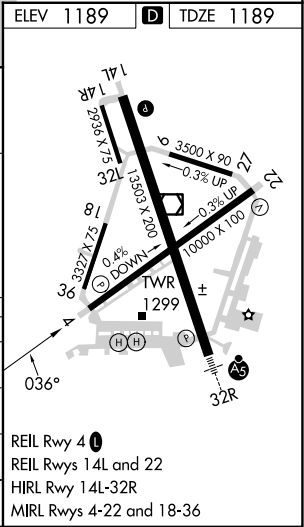
WAAS CH 42809 W04A	APP CRS 036°	Rwy ldg 10000 TDZE 1189 Apt Elev 1189
--	------------------------	--

RNAV (GPS) Y RWY 4
GRANT COUNTY INTL (MWH)

RNP APCH-GPS.		MISSED APPROACH: Climb to 4000 direct YELUG and on track 360° to WIPES and hold.		
Circling Rwy 9/27, 18/36 NA at night. For uncompensated Baro-VNAV systems, LNAV/VNAV NA below -15°C or above 54°C.				
ATIS 119.05	GRANT COUNTY APP CON ★ 126.4 379.95	GRANT COUNTY TOWER ★ 118.25 (CTAF) 0 257.8 (EAST) 128.0 257.8 (WEST)	GND CON 121.9	UNICOM 122.95



4 NM Holding Pattern		ONPIC	4000	YELUG	WIPES
8000 4000		2800	UBGYU	tr 360°	△
GP 3.00° TCH 50		ZOBEM 1.4 NM to RW04	RW04		
6.3 NM		3.5 NM	1.4 NM		
CATEGORY	A	B	C	D	
LPV DA	1389-3/4 200 (200-3/4)				
LNAV/VNAV DA	1461-7/8 272 (300-7/8)				
LNAV MDA	1560-1 371 (400-1)				
CIRCLING	1660-1 471 (500-1)	1680-1 491 (500-1 1/2)	1820-2 631 (700-2)		



NW-1, 07 AUG 2025 to 04 SEP 2025

NW-1, 07 AUG 2025 to 04 SEP 2025