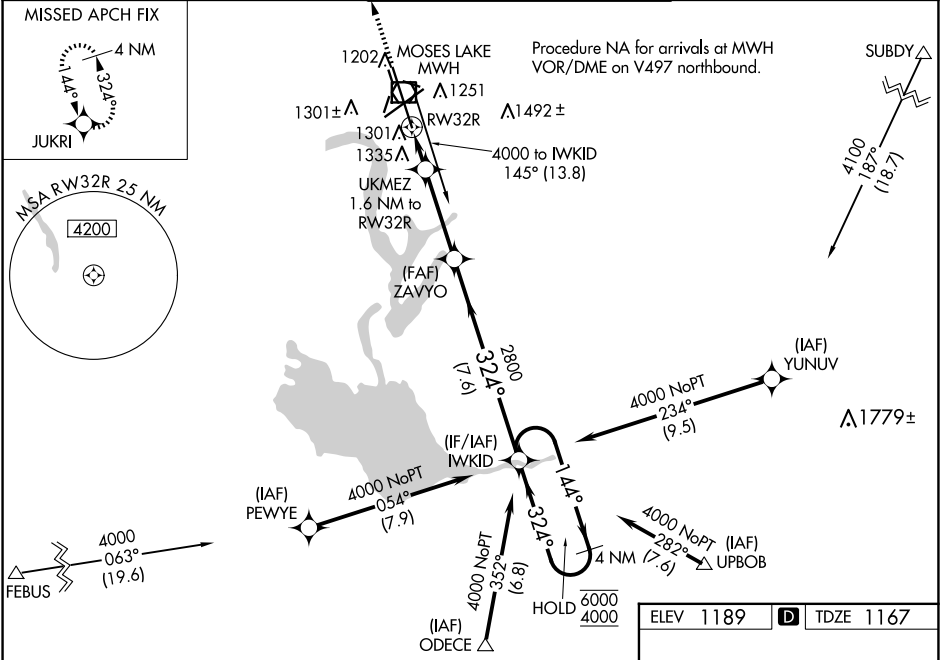


WAAS CH 77799 W32A	APP CRS 324°	Rwy Idg 13492 TDZE 1167 Apt Elev 1189
--	------------------------	--

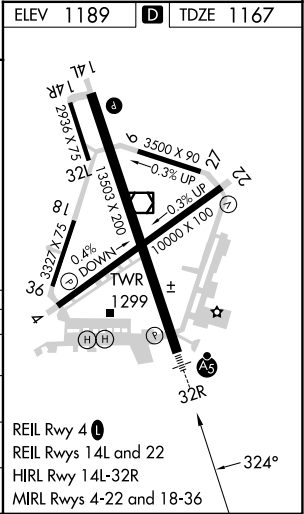
RNAV (GPS) Y RWY 32R
GRANT COUNTY INTL (MWH)

RNP APCH-GPS. ⚠ For uncompensated Baro-VNAV systems, LNAV/VNAV NA below -15°C or above 54°C. Circling Rwy 9/27, 18/36 NA at night. For inop ALS increase LNAV/VNAV all Cats visibility to RVR 5500, increase LNAV Cat C and D visibility to 1½ SM. *RVR 1800 authorized with use of FD or AP or HUD to DA (NA when using Ephrata altimeter setting).	MALSR ⚠	MISSED APPROACH: Climb to 4000 direct JUKRI and hold.
--	------------	---

ATIS 119.05	GRANT COUNTY APP CON * 126.4 379.95	GRANT COUNTY TOWER * 118.25 (CTAF) 0 257.8 (EAST) 128.0 257.8 (WEST)	GND CON 121.9	UNICOM 122.95
-----------------------	---	--	-------------------------	-------------------------



4000	JUKRI	VGSI and RNAV glidepath not coincident (VGSI Angle 3.00/TCH 76).	IWKID	4 NM Holding Pattern
UKMEZ	ZAVYO	1.6 NM to RW32R	2800	144° → 6000
RW32R			324°	← 324° 4000
		1.6 NM	3.4 NM	7.6 NM
				GP 3.00° TCH 55
CATEGORY	A	B	C	D
LPV DA*		1367/24	200 (200-½)	
LNAV/VNAV DA		1540/35	373 (400-¾)	
LNAV MDA	1620/24	453 (500-½)	1620/45	453 (500-¾)
CIRCLING	1660-1	471 (500-1)	1680-1½	1820-2
			491 (500-1½)	631 (700-2)



NW-1, 07 AUG 2025 to 04 SEP 2025

NW-1, 07 AUG 2025 to 04 SEP 2025