

WAAS CH 70410 W22A	APP CRS 216°	Rwy Idg TDZE 1166 Apt Elev 1189
--	------------------------	---

RNAV (GPS) Y RWY 22

GRANT COUNTY INTL (MWH)

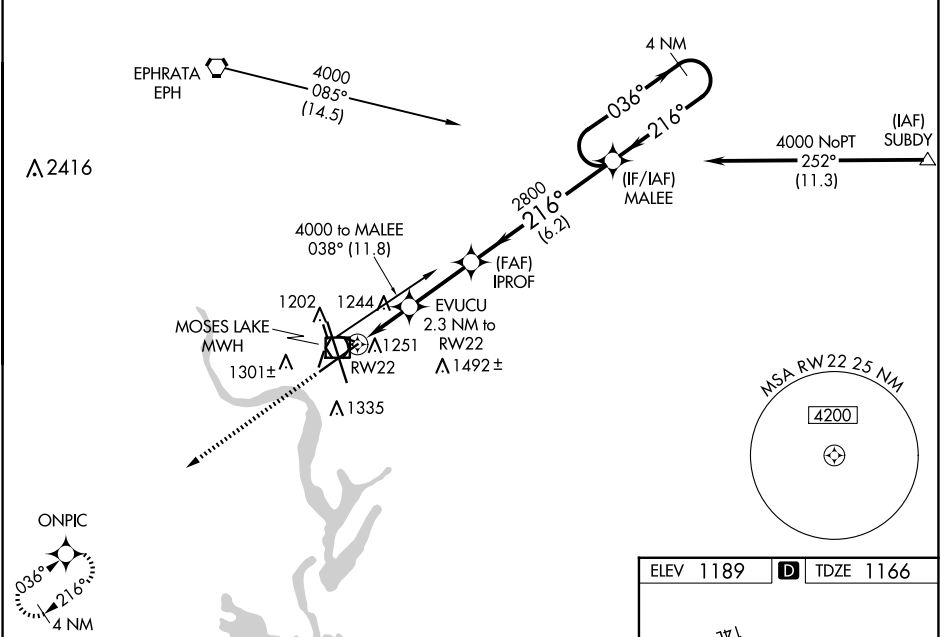
RNP APCH.

⚠ For uncompensated Baro-VNAV systems, LNAV/VNAV NA below -17°C or above 36°C. Baro-VNAV and VDP NA when using Ephrata altimeter setting. When local altimeter setting not received, use Ephrata altimeter setting; increase all DA 36 feet and all MDA 40 feet, increase LNAV/VNAV all Cats visibility and LNAV Cats C and D visibility $\frac{1}{8}$ SM and Circling Cat D visibility $\frac{1}{4}$ SM.

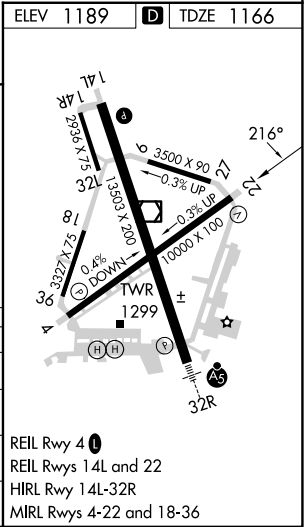
MISSED APPROACH:
Climb to 4000 direct ONPIC and hold.

ATIS 119.05	GRANT COUNTY APP CON ★ 126.4 379.95	GRANT COUNTY TOWER ★ 118.25 (CTAF) 0 257.8 (EAST) 128.0 257.8 (WEST)	GND CON 121.9	UNICOM 122.95
-----------------------	---	---	-------------------------	-------------------------

Procedure NA for arrivals at EPH VORTAC on airway radials 060 CW 135.



4000	ONPIC	MALEE				4 NM Holding Pattern
↑	✦	EVUCU 2.3 NM to RW22	IPROF 2800			
*LNAV only		*0.9 NM to RW22	2800	216°	036° →	4000
			2800	← 216°		
		1920*				GP 3.00° TCH 50
		0.9	1.4 NM	2.7 NM	6.2 NM	
CATEGORY		A	B	C	D	
LPV DA		1366-¾		200 (200-¾)		
LNAV/VNAV DA		1429-⅞		263 (300-⅞)		
LNAV MDA		1500-1		334 (400-1)		
CIRCLING		1660-1	471 (500-1)	1680-1½ 491 (500-1½)	1820-2 631 (700-2)	



NW-1, 07 AUG 2025 to 04 SEP 2025

NW-1, 07 AUG 2025 to 04 SEP 2025