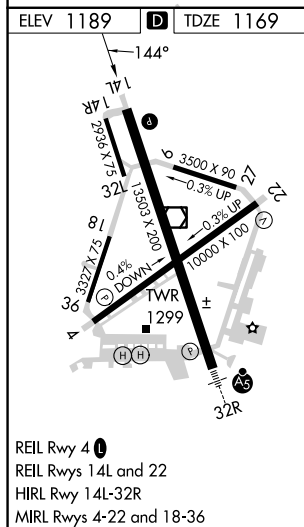
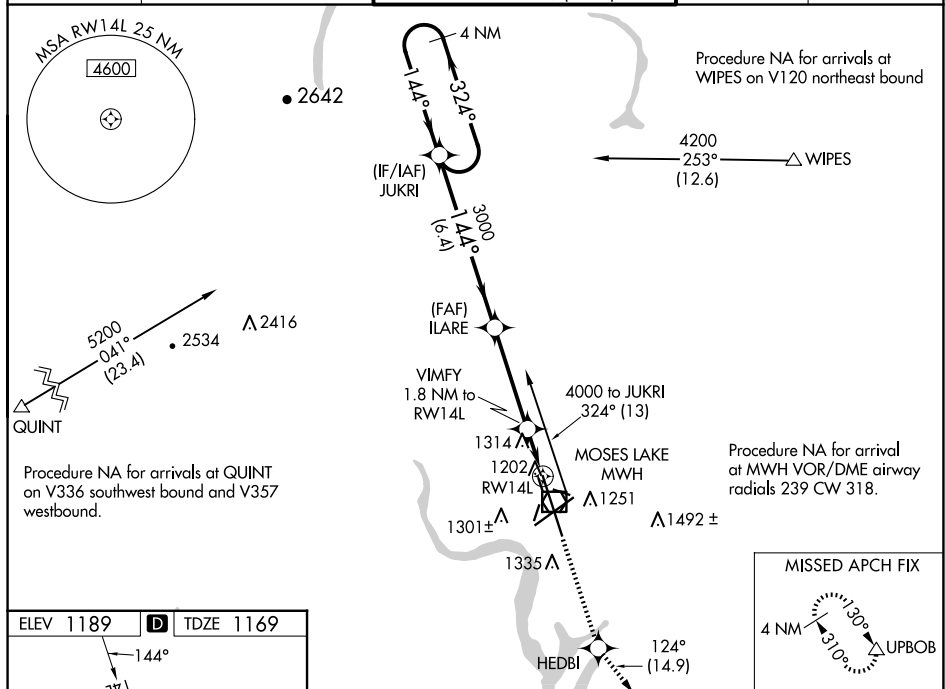


RNAV (GPS) Y RWY 14L  
GRANT COUNTY INTL (MWH)

**⚠** For uncompensated Baro-VNAV systems, LNAV/VNAV NA below -17°C or above 36°C.  
**⚠** Baro-VNAV and VDP NA when using Ephraht altimeter setting. When local altimeter setting not received, use Ephraht altimeter setting; increase all DA 36 feet and all MDA 40 feet, increase LNAV/VNAV visibility all Cats ½ SM, LNAV Cats C and D and Circling Cat D ¼ SM.

**MISSED APPROACH:** Climb to 4000 direct HEDBI and on track 124° to UPBOB and hold.

ATIS 119.05	GRANT COUNTY APP CON ★ 126.4 379.95	GRANT COUNTY TOWER ★ 118.25 (CTAF) 0 257.8 (EAST) 128.0 257.8 (WEST)	GND CON 121.9	UNICOM 122.95
----------------	--	--	------------------	------------------



VGS1 and RNAV glidepath not coincident (VGS1 Angle 3.00/TCH 75).

4 NM Holding Pattern

JUKRI

ILARE

4000

324°

144°

3000

144°

3000

1780

GP 3.00° TCH 52

6.4 NM

3.8 NM

0.7

1.1 NM

RW14L

VIMFY 1.8 NM to RW14L

\*1.1 NM to RW14L

\*RNAV only.

CATEGORY	A	B	C	D
LPV DA		1369- $\frac{3}{4}$	200 (200- $\frac{3}{4}$ )	
RNAV/VNAV DA		1436- $\frac{7}{8}$	267 (300- $\frac{7}{8}$ )	
RNAV MDA	1580-1	411 (400-1)	1580-1 $\frac{1}{8}$	411 (400-1 $\frac{1}{8}$ )
CIRCLING	1660-1	471 (500-1)	1680-1 $\frac{1}{2}$ 491 (500-1 $\frac{1}{2}$ )	1820-2 631 (700-2)