

APP CRS  
**036°**

Rwy Idg  
TDZE  
Apt Elev

**10000**  
**1189**  
**1189**

**RNAV (RNP) Z RWY 4**  
GRANT COUNTY INTL (MWH)

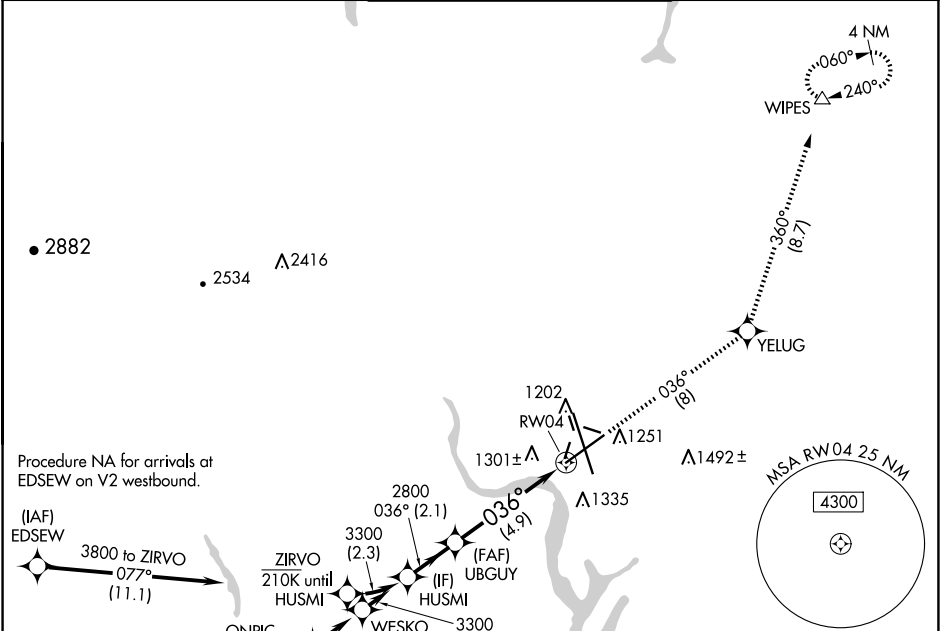
▼

▲

For uncompensated Baro-VNAV systems, procedure NA below -15°C or above 54°C.

MISSED APPROACH: Climb to 4000 on track 036° to YELUG and track 360° to WIPES and hold.

ATIS <b>119.05</b>	GRANT COUNTY APP CON ★ <b>126.4 379.95</b>	GRANT COUNTY TOWER ★ <b>118.25 (CTAF) 0 257.8 (EAST)</b> <b>128.0 257.8 (WEST)</b>	GND CON <b>121.9</b>	UNICOM <b>122.95</b>
-----------------------	---	--	-------------------------	-------------------------



ELEV 1189

**D**

TDZE 1189

	HUSMI		4000	YELUG	tr 036°	WIPES	tr 360°	△
	3300	036°	2800	UBGY	3300	2800	036°	2800
	GP 3.00°							
	TCH 50							
		2.1 NM		4.9 NM				
CATEGORY	A	B	C	D				
RNP 0.10 DA		1549-1	360 (400-1)					
RNP 0.30 DA		1644-1 3/8	455 (500-1 3/8)					
AUTHORIZATION REQUIRED								

REIL Rwy 4

REIL Rwy 14L and 22

HIRL Rwy 14L-32R

MIRL Rwy 4-22 and 18-36