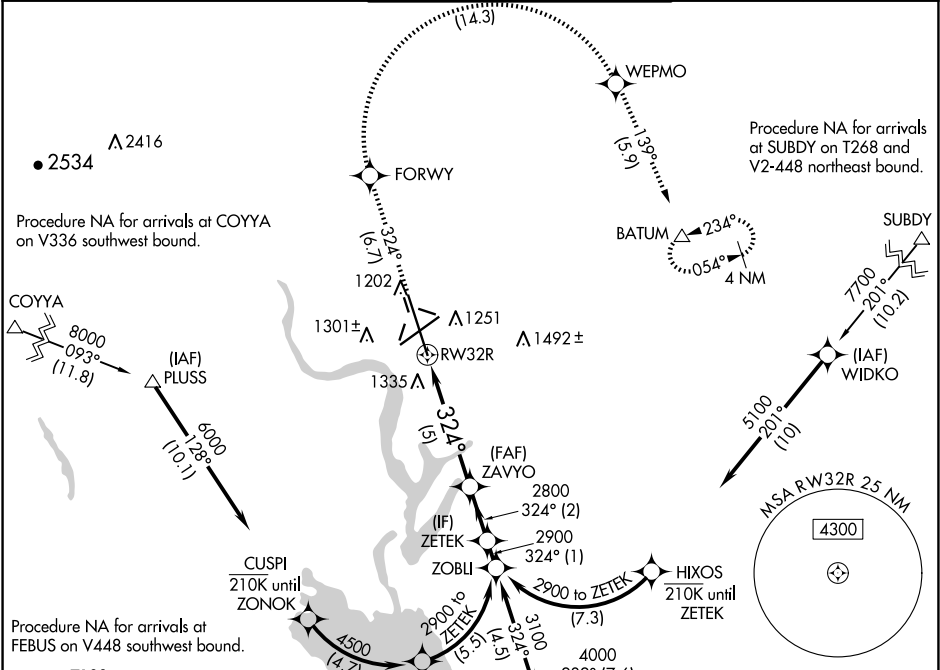


APP CRS	Rwy Idg	13492
324°	TDZE	1167
	Apt Elev	1189

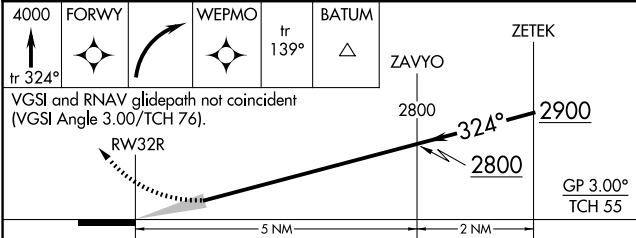
RNAV (RNP) Z RWY 32R
GRANT COUNTY INTL (MWH)

RNP AR APCH-GPS.	MALSR	MISSED APPROACH: Climb to 4000 on track 324° to FORWY right turn to WEPMO and track 139° to BATUM and hold.
For uncompensated Baro-VNAV systems, procedure NA below -15°C or above 54°C. For inoperative ALS increase RNP 0.10 visibility all Cats to RVR 4000, increase RNP 0.30 visibility all Cats to RVR 6000.		

ATIS 119.05	GRANT COUNTY APP CON ★ 126.4 379.95	GRANT COUNTY TOWER ★ 118.25 (CTAF) 257.8 (EAST) 128.0 257.8 (WEST)	GND CON 121.9	UNICOM 122.95
----------------	--	--	------------------	------------------



4000	FORWY	WEPMO	BATUM
tr 324°		tr 139°	



CATEGORY	A	B	C	D
RNP 0.10 DA		1417/24	250 (300-1/2)	
RNP 0.30 DA		1564/35	397 (400-5/8)	

AUTHORIZATION REQUIRED

