

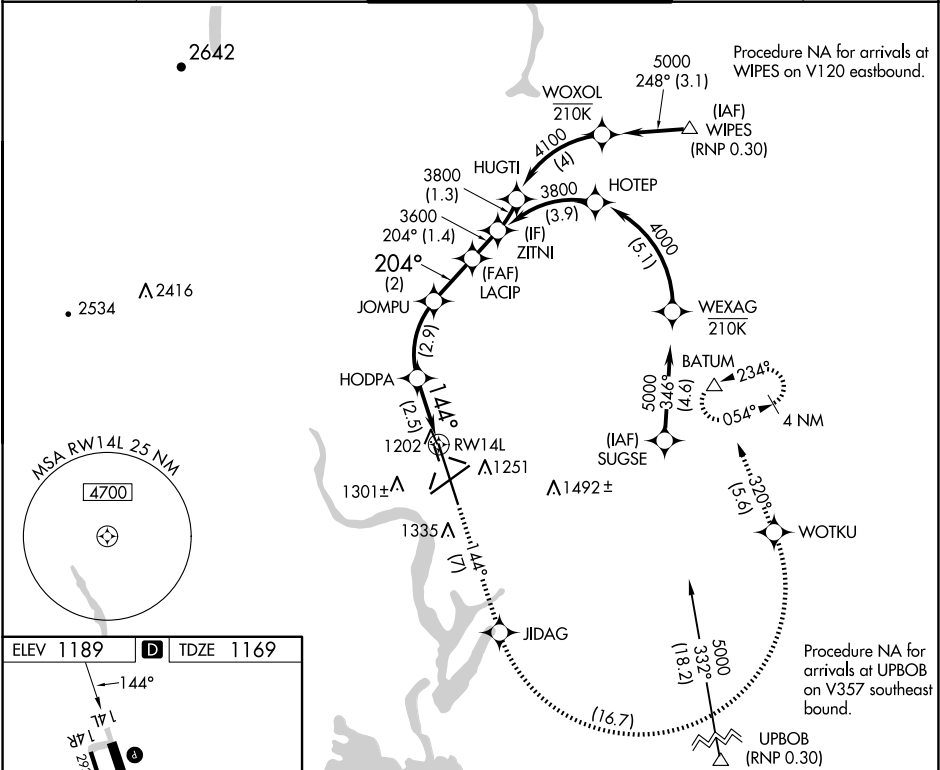
APP CRS	Rwy Idg	13503
144°	TDZE	1169
	Apt Elev	1189

RNAV (RNP) Z RWY 14L

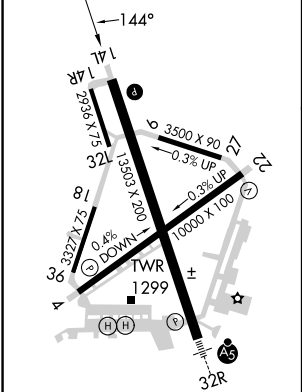
GRANT COUNTY INTL (MWH)

<div><div></div><div>For uncompensated Baro-VNAV systems, procedure NA below -17°C (2°F) or above 47°C (116°F). RF required. GPS required.</div></div>	<div>MISSED APPROACH: Climb to 4000 on track 144° to JIDAG left turn to WOTKU and track 320° to BATUM and hold.</div>
--	---

ATIS 119.05	GRANT COUNTY APP CON ★ 126.4 379.95	GRANT COUNTY TOWER ★ 118.25 (CTAF) 0 257.8 (EAST) 128.0 257.8 (WEST)	GND CON 121.9	UNICOM 122.95
----------------	--	--	------------------	------------------



ELEV 1189	D	TDZE 1169
-----------	---	-----------



REIL Rwy 4  
REIL Rwy 14L and 22  
HIRL Rwy 14L-32R  
MIRL Rwy 4-22 and 18-36

VGSI and RNAV glidepath not coincident (VGSI Angle 3.00/TCH 75).		4000	JIDAG	WOTKU	BATUM
ZITNI		tr 144°			△
LACIP					
JOMPU					
HODPA					
RW14L					
GP 3.00°					
TCH 52					
1.4 NM		2 NM	2.9 NM	2.5 NM	
CATEGORY	A	B	C	D	
RNP 0.10 DA		1419-¾	250 (300-¾)		
RNP 0.30 DA		1479-1	310 (300-1)		
AUTHORIZATION REQUIRED					