

LOC I-MWH	APP CRS	Rwy Idg	13492
109.5	324°	TDZE	1167
		Apt Elev	1189

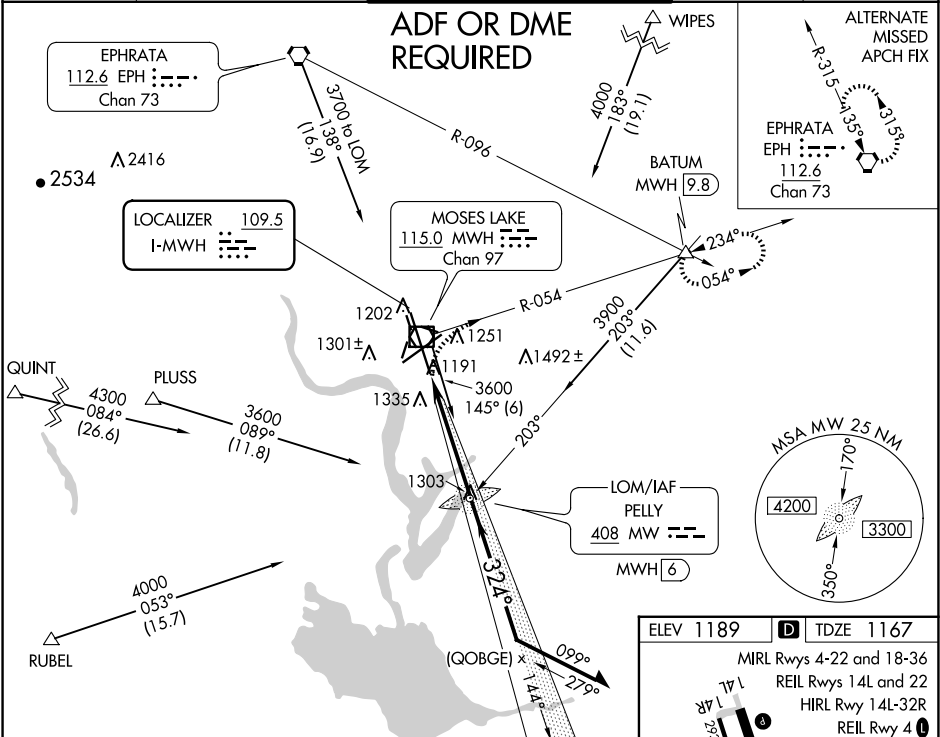
ILS or LOC RWY 32R
GRANT COUNTY INTL (MWH)

⚠ When local altimeter setting not received, use Ephrata altimeter setting; increase all DA/MDA 40 feet and Circling Cat D visibility ¼ SM. For inop MALS/R, increase S-LOC 32R Cat D visibility to RVR 5000. *RVR 1800 authorized with use of FD or AP or HUD to DA, NA when using Ephrata altimeter setting.

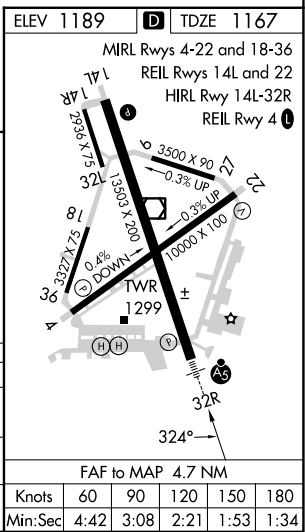
MALS R

⚠ MISSED APPROACH: Climb to 1800, then climbing right turn to 4000 on MWH R-054 to BATUM INT/MWH 9.8 DME and hold, continue climb-in-hold to 4000.

ATIS	GRANT COUNTY APP CON *	GRANT COUNTY TOWER *	GND CON	UNICOM
119.05	126.4 379.95	118.25 (CTAF) 0 257.8 (EAST) 128.0 257.8 (WEST)	121.9	122.95



CATEGORY	A	B	C	D
S-ILS 32R*	1367/24 200 (200-½)			
S-LOC 32R	1440/24 273 (300-½)		1440/40 273 (300-¾)	
CIRCLING	1680-1 491 (500-1)		1680-1½ 491 (500-1½)	1820-2 631 (700-2)



NW-1, 07 AUG 2025 to 04 SEP 2025

NW-1, 07 AUG 2025 to 04 SEP 2025