
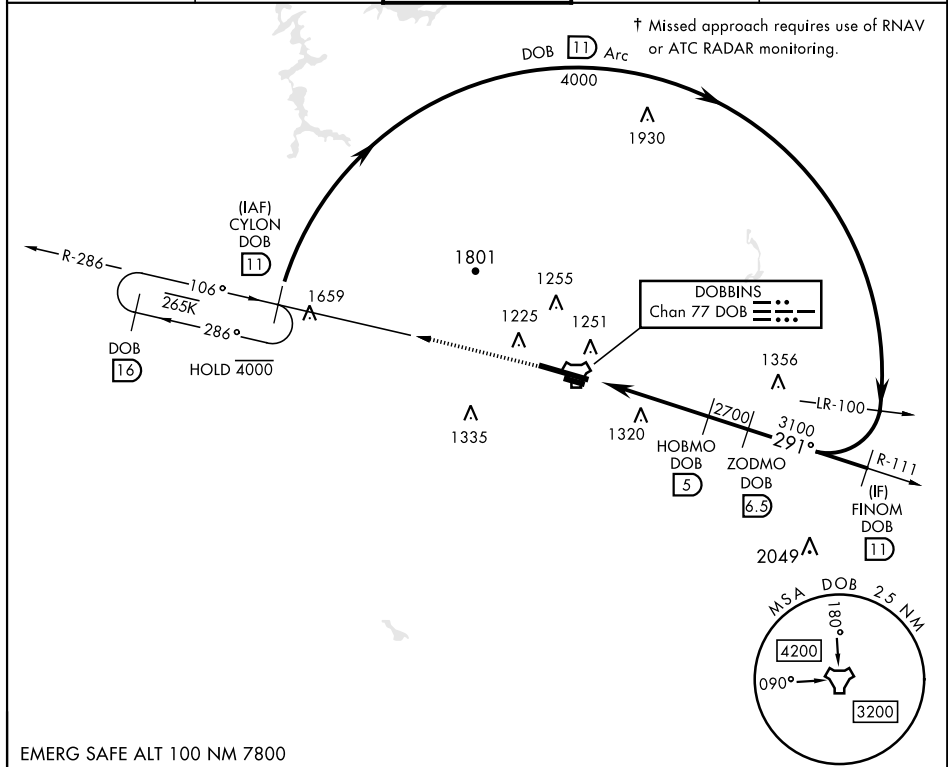


TACAN RWY 29

TACAN Chan 77	DOB 291°	APCH CRS 291°	Rwy Idg 10,002 TDZE 1014 Arprt Elev 1069	[USAF]	DOBBINS ARB (KMGE)
<p>▼ * When ALS inop, increase CAT AB RVR to 55 and vis to 1 mile, CAT CDE vis to 2 miles.</p> <p>** Circling not authorized N of Rwy 11-29 for CAT DE aircraft. Circling to assault strip not authorized.</p>				<p>SALSF</p> <p>(A2) </p>	<p>† MISSED APPROACH: Climb to 3000 on DOB TACAN R-286 to CYLON and hold.</p>

ATIS ★ 269.5	ATLANTA APP CON 121.0 268.7	TOWER ★ 120.75 370.875	GND CON 125.3 275.8	ASR
-----------------	--------------------------------	---------------------------	------------------------	-----



EMERG SAFE ALT 100 NM 7800

CATEGORY	A	B	C	D	E
S-29*	1720/40	706 (700-¾)	1720-1¾	706	1760-2½ (700-1¾)
C CIRCLING**	1720-1	651 (700-1)	1760-2 691 (700-2)	1760-2¼ 691 (700-2¼)	1760-2½ 691 (700-2½)

MARIETTA, GEORGIA

33°55'N-84°31'W

DOBBINS ARB (KMGE)

Amdt 8 11JUL24

TACAN RWY 29

SE-4, 07 AUG 2025 to 04 SEP 2025

SE-4, 07 AUG 2025 to 04 SEP 2025