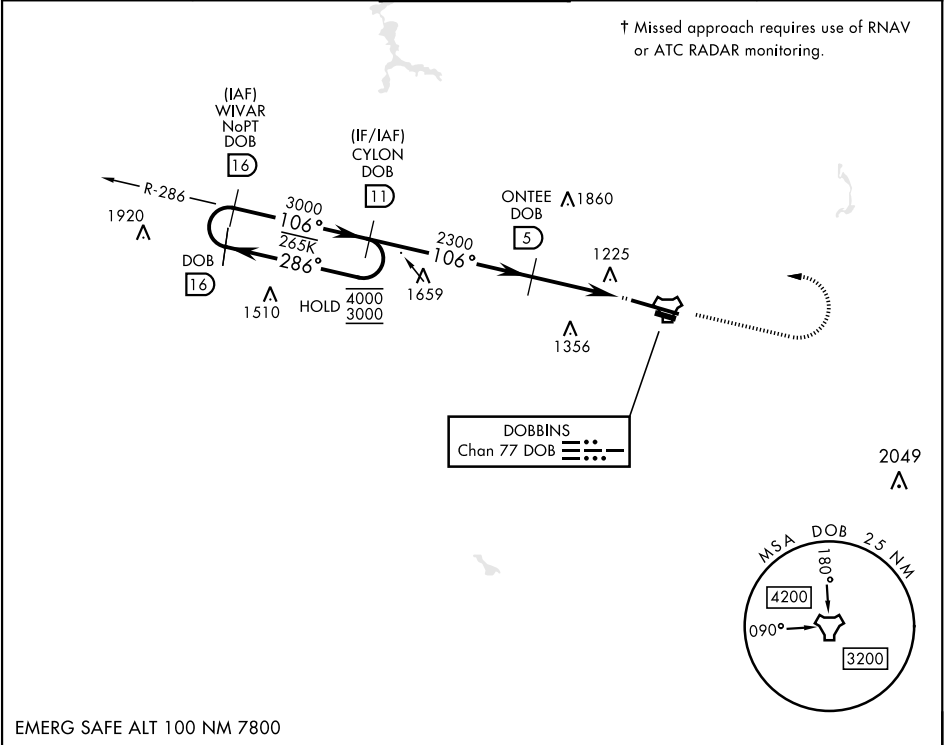


TACAN RWY 11

TACAN DOB Chan 77	APCH CRS 106°	Rwy Ldg 10,002 TDZE 1069 Arpt Elev 1069	[USAF]	DOBBINS ARB (KMGE)
* When ALS inop, increase CAT AB RVR to 55 and vis to 1 mile, CAT CDE vis to 1½ miles. ** Circling not authorized N of Rwy 11-29 for CAT DE aircraft. Circling to assault strip not authorized.			ALSF-1 A1	† MISSED APPROACH: Climb to 2000 on track 106°, then climbing left turn to 3000, intercept DOB TACAN R-286 to CYLON and hold.

ATIS ★ 269.5	ATLANTA APP CON 121.0 268.7	TOWER ★ 120.75 370.875	GND CON 125.3 275.8	ASR
-----------------	--------------------------------	---------------------------	------------------------	-----



EMERG SAFE ALT 100 NM 7800

<p>WIVAR 16, CYLON 11, ONTEE 5, KAMSE 2.8, TACAN. Altitudes: 3000, 2300, 2000, 3000. Distances: 3.2 NM, 0.5 NM. Angle: 2.97° TCH 56.</p>					ELEV 1069	TDZE 1069
CATEGORY	A	B	C	D	E	<p>HIRL Rwy 11-29, REIL Rwy 11 and 29, ASSAULT STRIP. Altitudes: 1273, 1255, 10,002 x 300, 110° 3495 x 60 290°.</p>
S-11*	1600/40	531 (600-¾)	1600/55	531 (600-1)		
CIRCLING**	1600-1 531 (600-1)	1620-1 551 (600-1)	1760-2 691 (700-2)	1760-2¼ 691 (700-2¼)	1760-2½ 691 (700-2½)	

SE-4, 07 AUG 2025 TO 04 SEP 2025

SE-4, 07 AUG 2025 TO 04 SEP 2025