


MARIETTA, GEORGIA

RNAV (GPS) RWY 29

APCH CRS	Rwy Idg	10,002
289°	TDZE	1014
	Arprt Elev	1069

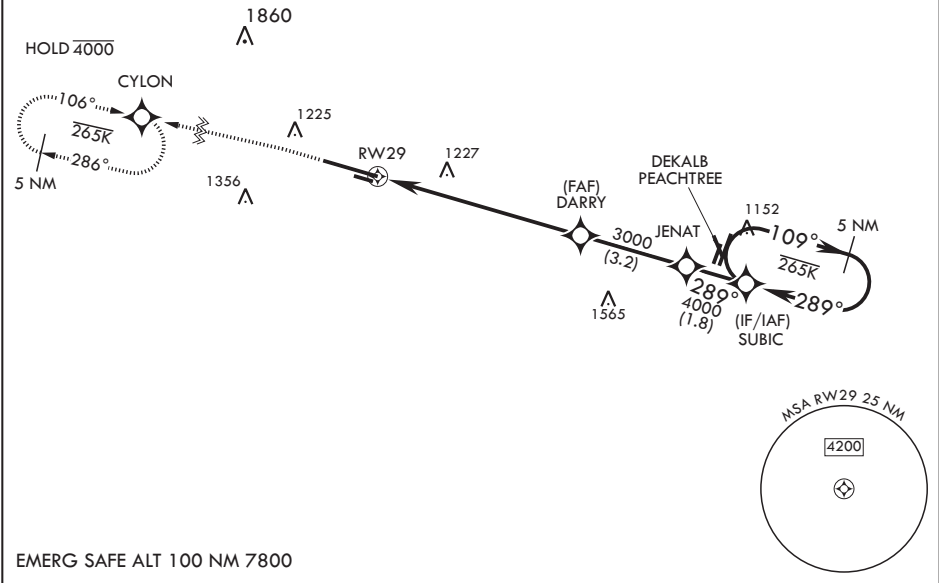
- (USAF)

DOBBINS ARB (KMGE)

RNP APCH. DME/DME RNP- 0.3 NA		SALS 	MISSED APPROACH: Climb to 2000 then climbing left turn to 3000 direct CYLON and hold.		
▼ * When ALS inop, increase vis to 1 3/8 miles. ** When ALS inop, increase CAT AB RVR to 55 and vis to 1 mile, CAT CDE vis to 1 3/8 miles.					
ATIS★ 269.5	ATLANTA APP CON/DEP CON 121.0 268.7	TOWER★ 120.75 370.875		GND CON 125.3 275.8	ASR

\*\*\* Circling not authorized N of Rwy 11-29 for CAT DE. Circling to assault strip not authorized.

For uncompensated Baro-VNAV systems, LNAV/VNAV NA below -17°C or above 54°C.



EMERG SAFE ALT 100 NM 7800

2000 crs 289°		3000 CYLON	5 NM Holding Pattern		ELEV 1069	TDZE 1014
RWY 29		1.5 NM to RWY 29	JENAT	SUBIC		
DARRY		3000	289°	109°		
4000		4000	289°	4000		
6.1 NM						
CATEGORY	A	B	C	D	E	
LNAV/VNAV DA*	1480/60		466	(500-1½)		
LNAV MDA**	1520/40	506 (500-¾)	1520-1¼	506	(500-1¼)	
CIRCLING***	1580-1 511 (600-1)	1620-1 551 (600-1)	1760-2 691 (700-2)	1760-2¼ 691 (700-2¼)	1760-2½ 691 (700-2½)	HIRL all Rwys REIL Rwys 11, 29

MARIETTA, GEORGIA

33°55'N - 84°31'W

DOBBINS ARB (KMGE)

Amdt 3 11JUL24

RNAV (GPS) RWY 29

SE-4, 07 AUG 2025 to 04 SEP 2025

SE-4, 07 AUG 2025 to 04 SEP 2025