
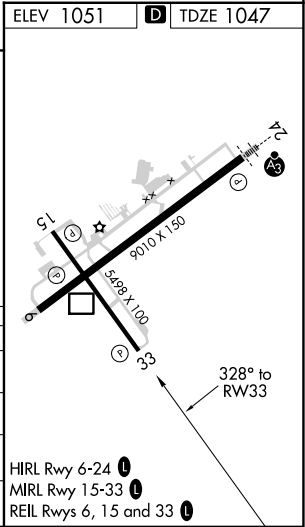
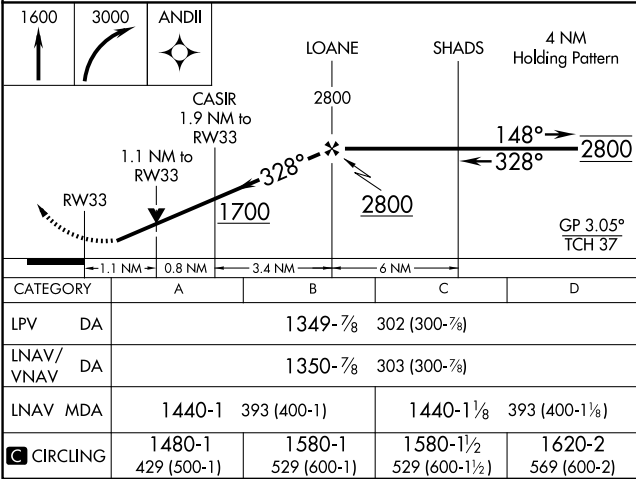
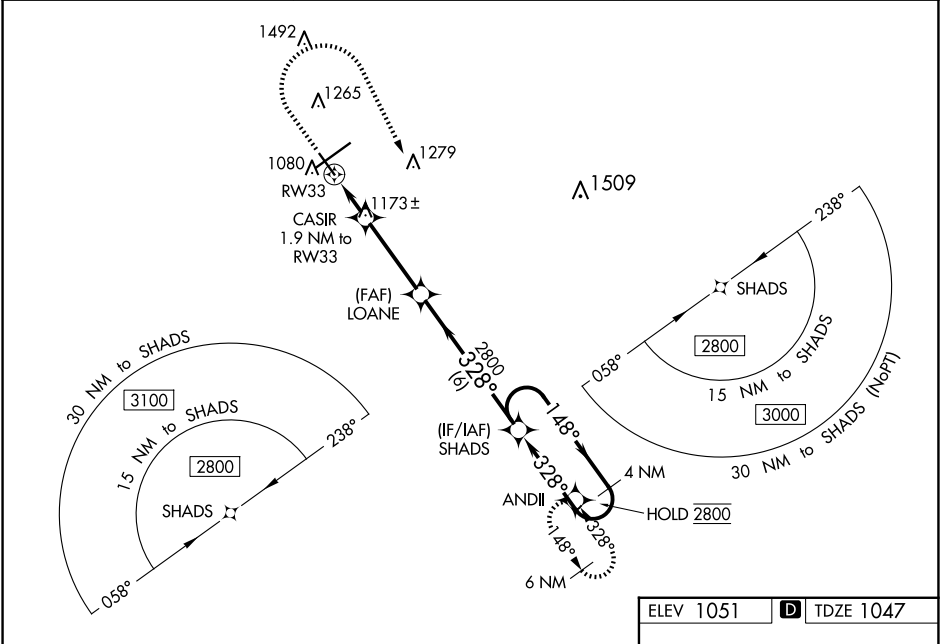


WAAS CH <b>77545</b> <b>W33A</b>	APP CRS <b>328°</b>	Rwy ldg TDZE Apt Elev
		<b>5498</b> <b>1047</b> <b>1051</b>

**RNAV (GPS) RWY 33**  
SPRINGFIELD/BECKLEY MUNI (SGH)

RNP APCH - GPS.		MISSED APPROACH: Climb to 1600 then climbing right turn to 3000 direct ANDII and hold.
	Rwy 33 helicopter visibility reduction below 3/4 SM NA. For uncompensated Baro-VNAV systems, LNAV/VNAV NA below -17°C or above 54°C.	

AWOS-3PT <b>134.975</b>	COLUMBUS APP CON <b>118.85 269.275</b>	UNICOM <b>122.95 (CTAF) 0</b>
----------------------------	-------------------------------------------	----------------------------------



EC-2, 07 AUG 2025 to 04 SEP 2025

EC-2, 07 AUG 2025 to 04 SEP 2025