

WAAS CH 45510 W25A	APP CRS 247°	Rwy Idg 8003 TDZE 41 Apt Elev 42
--	------------------------	---

RNAV (GPS) RWY 25

NEWPORT NEWS/WILLIAMSBURG INTL (PHF)

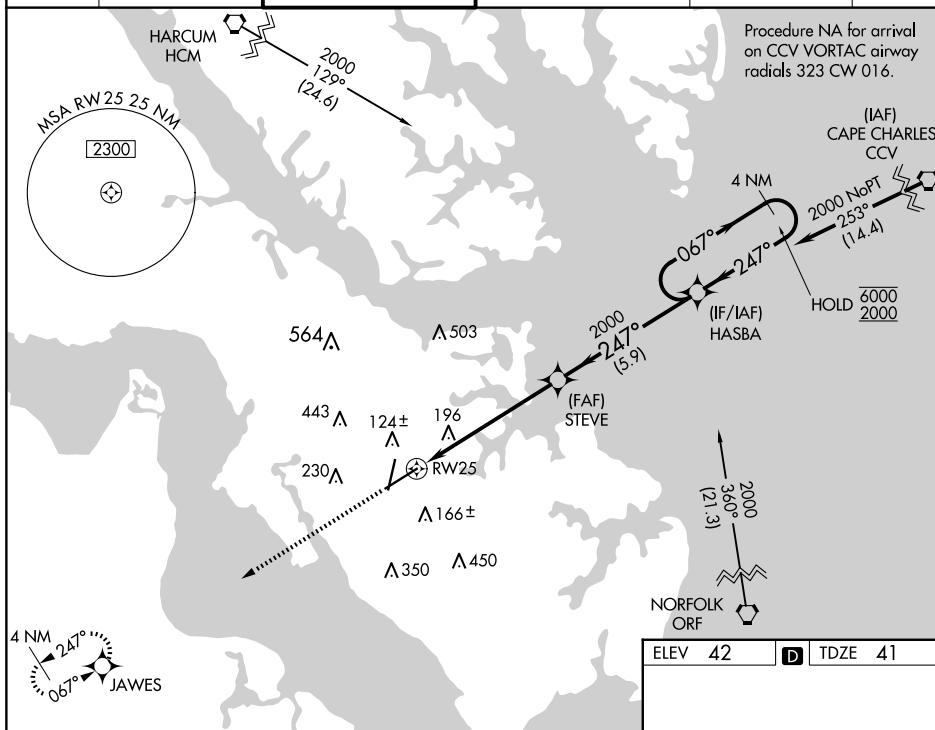
RNP APCH.



For uncompensated Baro-VNAV systems, LNAV/VNAV NA below -11° C or above 54° C.

MISSED APPROACH: Climb to 2000 direct JAWES and hold.

ATIS 128.65	NORFOLK APP CON 125.7	NEWPORT NEWS TOWER ★ 118.7 (CTAF) 0 257.9	GND CON 121.9 348.6	CLNC DEL 121.65 225.4	UNICOM 122.95
----------------	--------------------------	--	------------------------	--------------------------	------------------

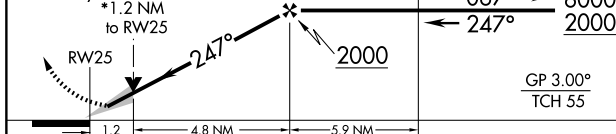



NE-3, 07 AUG 2025 to 04 SEP 2025

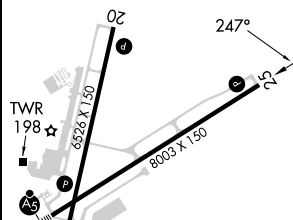
2000	JAWES	VGSI and RNAV glidepath not coincident (VGSI Angle 3.00/TCH 71).
------	-------	--



* LNAV only



CATEGORY		A	B	C	D
LPV	DA	241- $\frac{3}{4}$		200 (200- $\frac{3}{4}$)	
LNAV/ VNAV	DA	516-1 $\frac{5}{8}$		475 (500-1 $\frac{5}{8}$)	
LNAV	MDA	480-1 439 (500-1)		480-1 $\frac{1}{4}$ 439 (500-1 $\frac{1}{4}$)	
 CIRCLING		520-1 478 (500-1)	540-1 498 (500-1)	760-2 718 (800-2)	780-2 $\frac{1}{4}$ 738 (800-2 $\frac{1}{4}$)



REIL Rwys 20 and 25 **L**
HIRL Rwys 2-20 and 7-25 **L**