

WAAS
CH 97420
W20A

APP CRS
202°

Rwy Idg
TDZE
Apt Elev

6526
42
42

RNAV (GPS) RWY 20

NEWPORT NEWS/WILLIAMSBURG INTL (PHF)

RNP APCH.

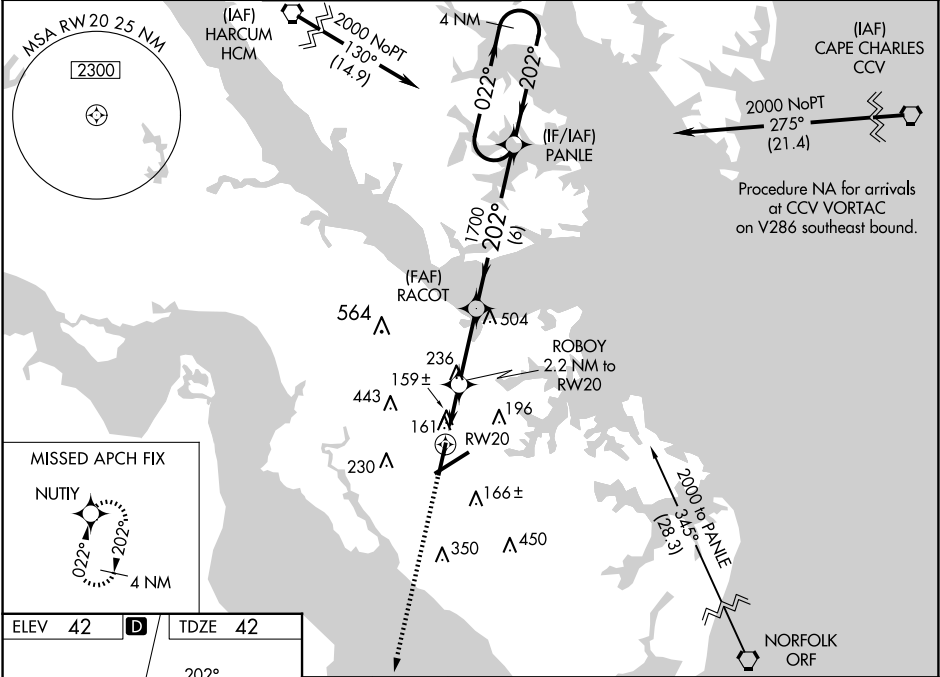
T

A

For uncompensated Baro-VNAV systems, LNAV/VNAV NA below -11°C or above 54°C.
Rwy 20 helicopter visibility reduction below ¾ SM NA.

MISSED APPROACH:
Climb to 2300 direct NUTTY and hold.

ATIS 128.65	NORFOLK APP CON 125.7 335.625	NEWPORT NEWS TOWER ★ 118.7(CTAF) 0 257.9	GND CON 121.9 348.6	CLNC DEL 121.65 225.4	UNICOM 122.95
----------------	----------------------------------	---	------------------------	--------------------------	------------------



ELEV 42 D TDZE 42

202°

TWR 198

6822 X 130

8003 X 150

2

2300 NUTTY

ROBOY 2.2 NM to RW20

RACOT 1700

PANLE 4 NM Holding Pattern

* LNAV only

* 1.1 NM to RW20

* 780

1700

2000

GP 3.00° TCH 42

1.1 NM 1.1 NM 2.8 NM 6 NM

CATEGORY	A	B	C	D
LPV DA	379-1½ 337 (400-1½)			
LNAV/VNAV DA	474-1½ 432 (500-1½)			
LNAV MDA	440-1 398 (400-1)		440-1½ 398 (400-1½)	
CIRCLING	520-1 478 (500-1)	540-1 498 (500-1)	760-2 718 (800-2)	780-2¼ 738 (800-2¼)