

WAAS CH 61020 W02A	APP CRS 022°	Rwy Idg TDZE Apt Elev	6526 38 42
--	------------------------	-----------------------------	---------------------------------------

RNAV (GPS) RWY 2

NEWPORT NEWS/WILLIAMSBURG INTL (PHF)

RNP APCH.



For uncompensated Baro-VNAV systems, LNAV/VNAV NA below -11°C or above 54°C.

MISSED APPROACH: Climb to 2000 direct PANLE and hold.

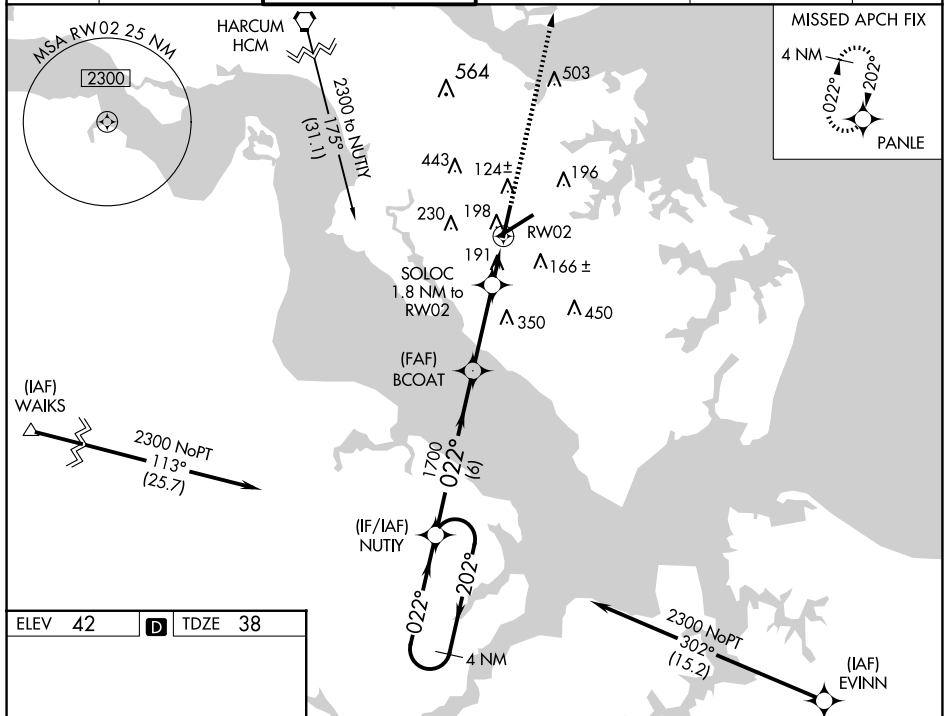
ATIS
128.65

NORFOLK APP CON
125.7 335.625

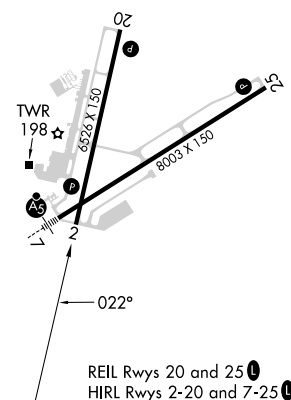
NEWPORT NEWS TOWER★
118.7(CTAF) 257.9

GND CON
121.9 348.6

CLNC DEL
121.65 225.4

UNICOM
122.95

ELEV	42		TDZE	38
------	----	---	------	----



REIL Rwy 20 and 25 **L**
HIRL Rwy 2-20 and 7-25 **L**

4 NM Holding Pattern

NUTTY

VGSI and RNAV glidepath not coincident (VGSI Angle 3.00/TCH 53).

BCOAT

SOLOC 1.8 NM to RW02

2000 PANLE

2300 202° 022°

1700

GP 3.00° TCH 60

1700

*1.1 NM to RW02

*660

*1.1 NM to RW02

RW02

*RNAV only

6 NM 3.2 NM 0.7 1.1 NM

CATEGORY	A	B	C	D
LPV DA	241-1 203 (200-1)			
RNAV/DA	476-1½ 438 (500-1½)			
RNAV MDA	460-1 422 (500-1)		460-1¼ 422 (500-1¼)	
CIRCLING	520-1 478 (500-1)	540-1 498 (500-1)	760-2 718 (800-2)	780-2¼ 738 (800-2¼)

RNAV (GPS) RWY 2