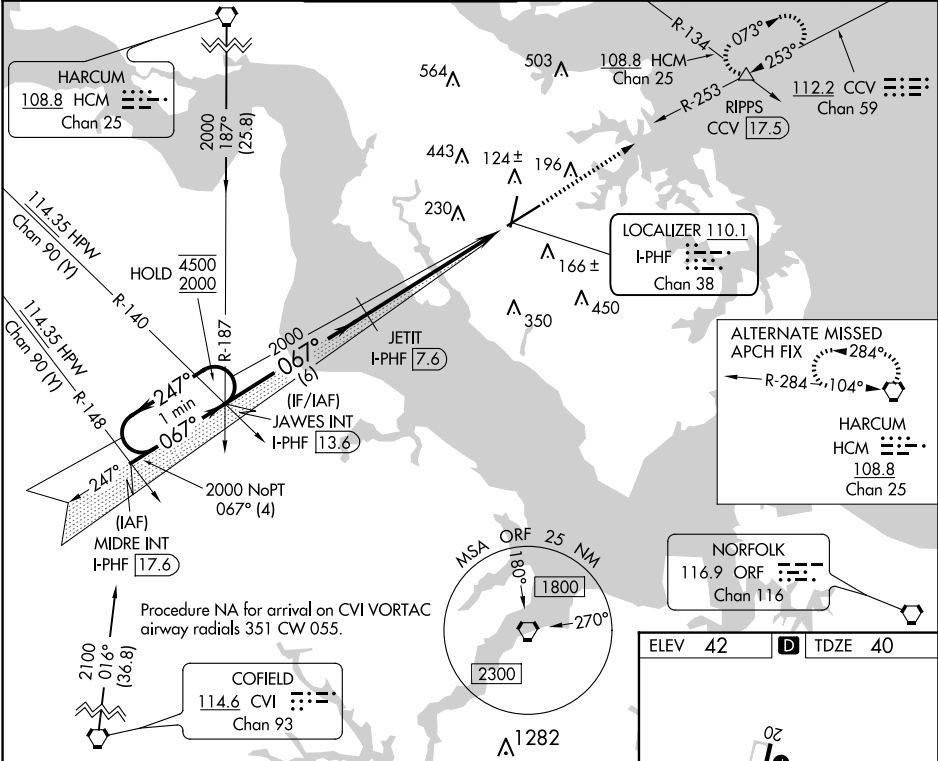


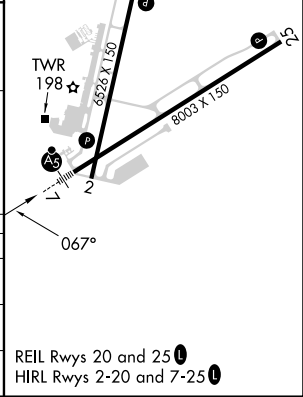
LOC/DME I-PHF	APP CRS	Rwy Idg	8003
110.1	067°	TDZE	40
Chan 38		Apt Elev	42

ILS or LOC RWY 7
NEWPORT NEWS/WILLIAMSBURG INTL (PHF)

DME required.			MALSR	MISSED APPROACH: Climb to 2500 on heading 067° and on CCV VORTAC R-253 to RIPPS INT/CCV 17.5 DME and hold, continue climb-in-hold to 2500.		
# RVR 1800 authorized with use of FD or AP or HUD to DA.						
ATIS	NORFOLK APP CON	NEWPORT NEWS TOWER*	GND CON	CLNC DEL	UNICOM	
128.65	125.7 335.625	118.7 (CTAF) 0 257.9	121.9 348.6	121.65 225.4	122.95	



One Minute Holding Pattern	JAWES INT I-PHF 13.6				JETIT I-PHF 7.6				CCV R-253				RIPPS			
	4500 ← 247°				2000 → 067°				2500 ↑ hdg 067°				2000			
	2000				067°				*I-PHF 2.8				*LOC only			
	GS 3.00° TCH 59				2000				I-PHF 1.6							
CATEGORY	A				B				C				D			
S-ILS 7 #	240/24				200 (200-½)											
S-LOC 7	480/24				440 (500-½)				480/40				440 (500-¾)			
CIRCLING	520-1 478 (500-1)				540-1 498 (500-1)				760-2 718 (800-2)				780-2¼ 738 (800-2¼)			



NE-3, 07 AUG 2025 to 04 SEP 2025

NE-3, 07 AUG 2025 to 04 SEP 2025