

LOC/DME I-DHY	APP CRS	Rwy Idg	8003
110.1	247°	TDZE	41
Chan 38		Apt Elev	42

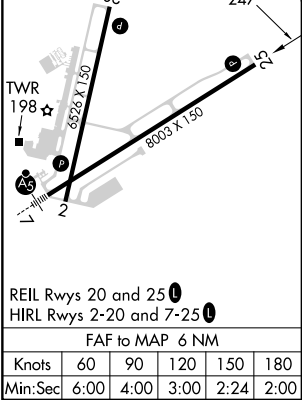
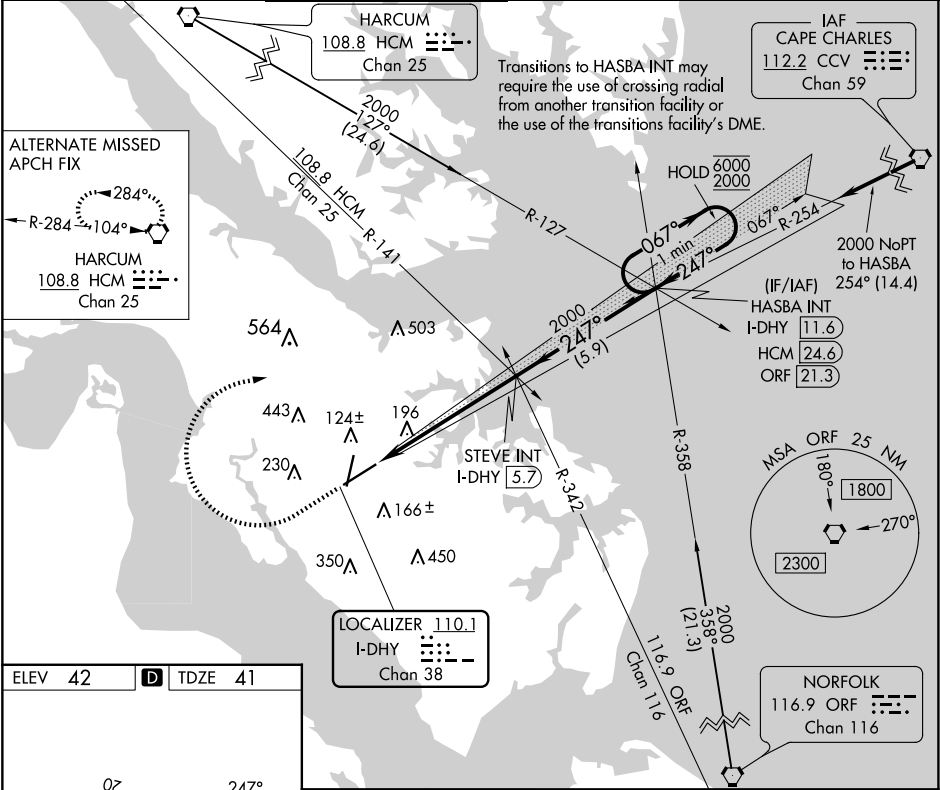
ILS or LOC RWY 25

NEWPORT NEWS/WILLIAMSBURG INTL (PHF')

⚠

MISSED APPROACH: Climb to 500 then climbing right turn to 2500 on heading 080° and CCV VORTAC R-254 to HASBA INT/I-DHY 11.6 DME and hold.

ATIS	NORFOLK APP CON	NEWPORT NEWS TOWER★	GND CON	CLNC DEL	UNICOM
128.65	125.7	118.7 (CTAF) 0 257.9	121.9 348.6	121.65 225.4	122.95



500	2500	CCV R-254	HASBA INT	VGSI and ILS glidepath not coincident (VGSI Angle 3.00/TCH 71).	STEVE INT I-DHY [5.7]	HASBA INT I-DHY [11.6]	One Minute Holding Pattern
*LOC only	*I-DHY [0.9]	I-DHY [0.3]	2000	247°	067°	6000	2000
1.2	4.8 NM	5.9 NM					GS 3.00° TCH 55
CATEGORY	A	B	C	D			
S-ILS 25		241-¾	200 (200-¾)				
S-LOC 25	480-1	439 (500-1)	480-1¼	439 (500-1¼)			
CIRCLING	520-1 478 (500-1)	540-1 498 (500-1)	760-2 718 (800-2)	780-2¼ 738 (800-2¼)			