

(HENRY4.PHF) 25219

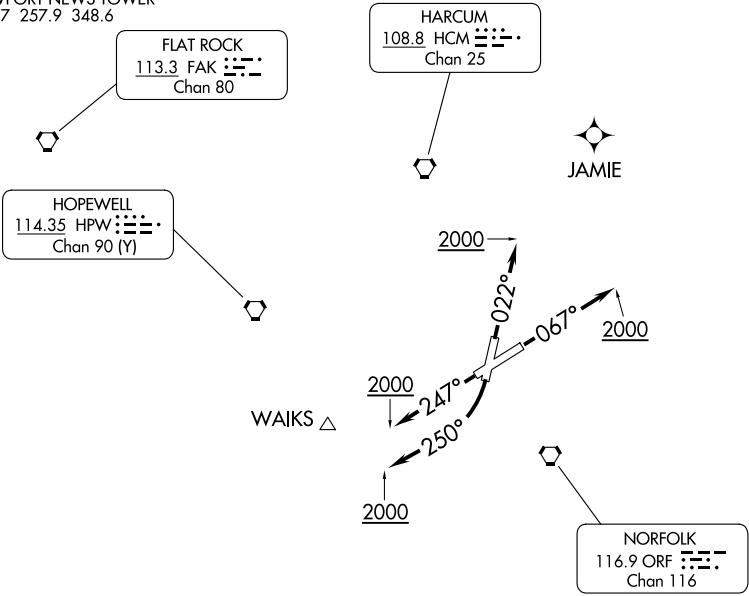
HENRY FOUR DEPARTURE

NEWPORT NEWS/WILLIAMSBURG INTL (PHF)
NEWPORT NEWS, VIRGINIA

AL-957 (FAA)

NORFOLK DEP CON
124.9 335.625
ATIS
128.65
CLNC DEL
121.65 225.4
GND CON
121.9 348.6
NEWPORT NEWS TOWER ★
118.7 257.9 348.6

RADAR required.



TAKEOFF MINIMUMS
Rwys 2, 7, 20, 25: Standard.

NOTE: Chart not to scale.

▼

DEPARTURE ROUTE DESCRIPTION

TAKEOFF RUNWAY 2: Climb on heading 022° to 2000, thence ...

TAKEOFF RUNWAY 7: Climb on heading 067° to 2000, thence ...

TAKEOFF RUNWAY 20: Climbing right turn to 2000 on heading 250°, thence ...

TAKEOFF RUNWAY 25: Climb on heading 247° to 2000, thence ...

... on vectors to assigned route/fix. Expect requested altitude 10 minutes after departure.