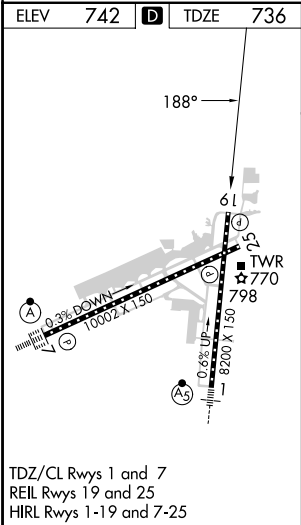
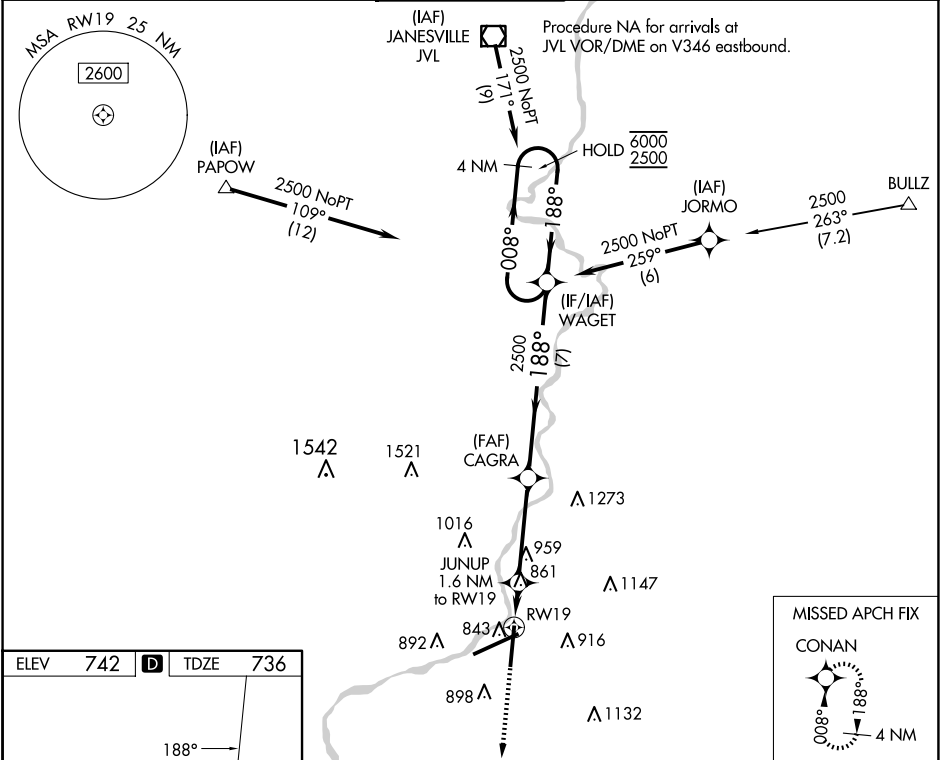




WAAS CH <b>40435</b> <b>W19A</b>	APP CRS <b>188°</b>	Rwy Idg <b>8099</b> TDZE <b>736</b> Apt Elev <b>742</b>
--	------------------------	--

RNAV (GPS) RWY 19  
CHICAGO/ROCKFORD INTL (RFD)

RNP APCH - GPS. For uncompensated Baro-VNAV systems, LNAV/VNAV NA below -20°C or above 54°C.				MISSED APPROACH: Climb to 2500 direct CONAN and hold.
ATIS <b>127.6</b>	ROCKFORD APP CON <b>121.0 327.0</b>	ROCKFORD TOWER <b>118.1 290.375</b>	GND CON <b>121.9 290.375</b>	CLNC DEL <b>119.25</b>



2500 ↑		CONAN 		VGSI and RNAV glidepath not coincident (VGSI Angle 3.00/TCH 75).		4 NM Holding Pattern	
RW19 		JUNUP 1.6 NM to RW19		CAGRA 2500		WAGET	
1 NM to RW19		1280		188°		008° → 6000 ← 188° 2500	
1 NM		0.6 NM		3.8 NM		7 NM	
GP 3.00° TCH 50							
CATEGORY	A		B		C		D
LPV DA			936- <sup>3</sup> / <sub>4</sub>		200 (200- <sup>3</sup> / <sub>4</sub> )		
LNAV/ VNAV DA			1039- <sup>7</sup> / <sub>8</sub>		303 (300- <sup>7</sup> / <sub>8</sub> )		
LNAV MDA	1120-1		384 (400-1)		1120-1 <sup>1</sup> / <sub>8</sub>		384 (400-1 <sup>1</sup> / <sub>8</sub> )
CIRCLING	1220-1		1280-1		1320-1 <sup>1</sup> / <sub>2</sub>		1460-2 <sup>1</sup> / <sub>4</sub>
	478 (500-1)		538 (600-1)		578 (600-1 <sup>1</sup> / <sub>2</sub> )		718 (800-2 <sup>1</sup> / <sub>4</sub> )