

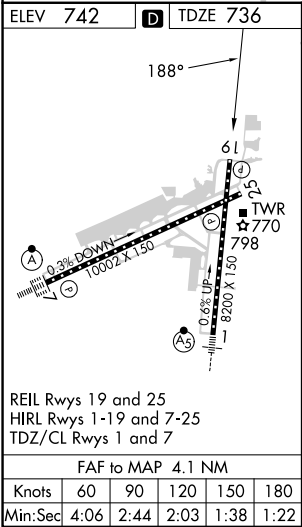
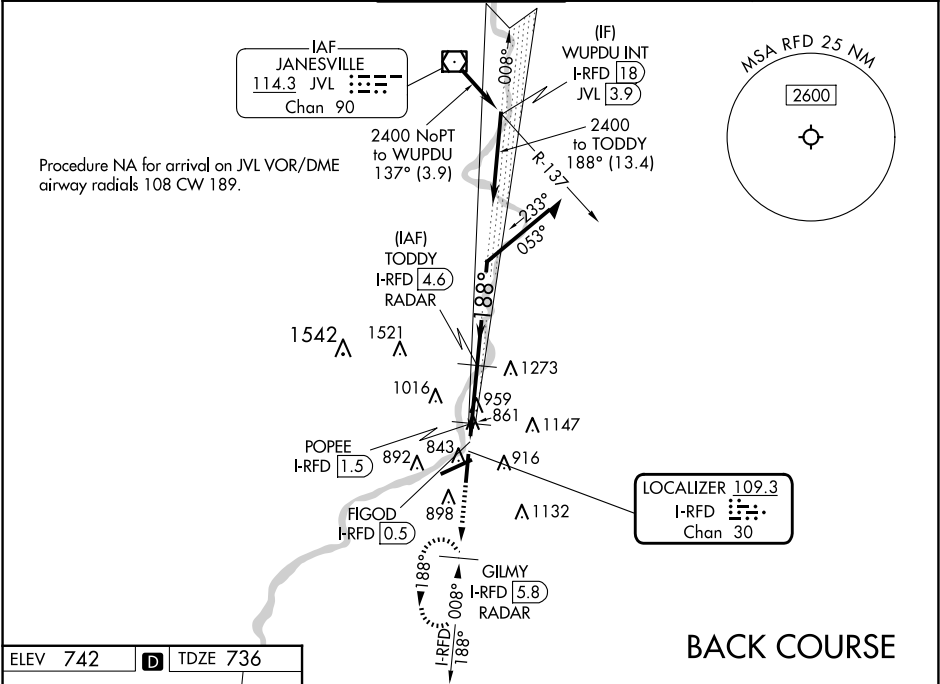
LOC/DME I-RFD 109.3 Chan 30	APP CRS 188°	Rwy Idg 8099 TDZE 736 Apt Elev 742
-------------------------------------------------	------------------------	---------------------------------------------------------------

LOC BC RWY 19

CHICAGO/ROCKFORD INTL (RFD)

DME or RADAR required.	MISSED APPROACH: Climb to 2500 on I-RFD localizer course S (188°) to GILMY 5.8 DME/RADAR and hold, continue climb-in-hold to 2500.
ASR	

ATIS 127.6	ROCKFORD APP CON 121.0 327.0	ROCKFORD TOWER 118.1 290.375	GND CON 121.9 290.375	CLNC DEL 119.25
----------------------	----------------------------------------	----------------------------------------	---------------------------------	---------------------------



BACK COURSE				
2500 I-RFD crs S (188°) GILMY I-RFD 5.8 RADAR TODDY I-RFD 4.6 RADAR				
POPEE I-RFD 1.5 FIGOD I-RFD 0.5				
1260 1260 2600 2400 008° 188° 3.09° TCH 75				
Remain within 10 NM Use I-RFD DME when on LOC course. Disregard glide slope indications.				
CATEGORY	A		B	
S-19	1260-1 524 (600-1)		1260-1½ 524 (600-1½)	
CIRCLING	1260-1 518 (600-1)	1280-1 538 (600-1)	1320-1½ 578 (600-1½)	1460-2¼ 718 (800-2¼)
POPEE FIX MINIMUMS (DME REQUIRED)				
S-19	1140-1 404 (400-1)		1140-1⅛ 404 (400-1⅛)	
CIRCLING	1220-1 478 (500-1)	1280-1 538 (600-1)	1320-1½ 578 (600-1½)	1460-2¼ 718 (800-2¼)