

LOC/DME I-UDY 109.55 Chan 32 (Y)	APP CRS 068°	Rwy Idg 10002 TDZE 742 Apt Elev 742
--	------------------------	--

ILS or LOC RWY 7

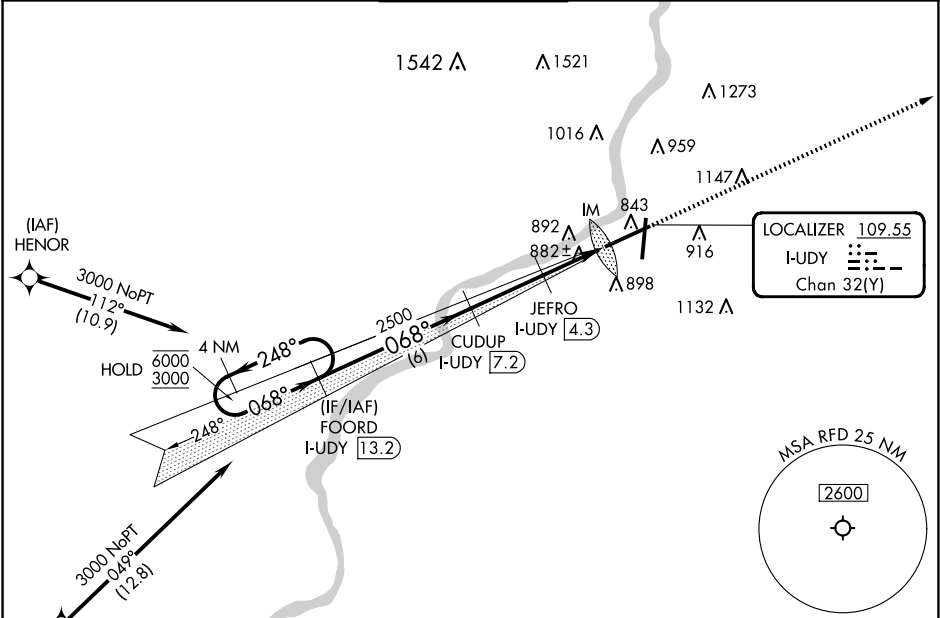
CHICAGO/ROCKFORD INTL (RFD)

DME required for LOC only.
RNP APCH - GPS. From HENOR or SOSSO.
RADAR required.

ALS-F2

MISSED APPROACH: Climb to 3000
on heading 068°. Expect RADAR
vectors. (RADAR required).

ATIS 127.6	ROCKFORD APP CON 121.0 327.0	ROCKFORD TOWER 118.1 290.375	GND CON 121.9 290.375	CLNC DEL 119.25
----------------------	--	--	---------------------------------	---------------------------



ELEV 742

TDZE 742

VGSI and ILS glidepath not coincident
(VGSI Angle 3.00/TCH 69).

4 NM Holding Pattern

FOORD I-UDY 13.2

CUDUP I-UDY 7.2

JEFRO I-UDY 4.3

IM I-UDY 1.8

6000 ← 248°

3000 → 068°

GS 3.00° TCH 60

2500

1580

6 NM

2.8 NM

1.3 NM

1.1

0.1

3000

hdg 068°

CATEGORY	A	B	C	D
S-ILS 7	942/18		200 (200-½)	
S-LOC 7	1200/24	458 (500-½)	1200/45	458 (500-¾)
CIRCLING	1220-1 478 (500-1)	1280-1 538 (600-1)	1320-1½ 578 (600-1½)	1460-2¼ 718 (800-2¼)

REIL Rwy 19 and 25
HIRL Rwy 1-19 and 7-25
TDZ/CL Rwy 1 and 7

FAF to MAP 5.3 NM

Knots	60	90	120	150	180
Min:Sec	5:18	3:32	2:39	2:07	1:46