

LOC/DME I-UDY

109.55

Chan 32 (Y)

APP CRS

068°

Rwy Idg

1000Z

TDZE

742

Apt Elev

742

ILS RWY 7 (CAT II & III)

CHICAGO/ROCKFORD INTL (RFD)

RNP APCH - GPS. From HENOR or SOSSO. RADAR required.

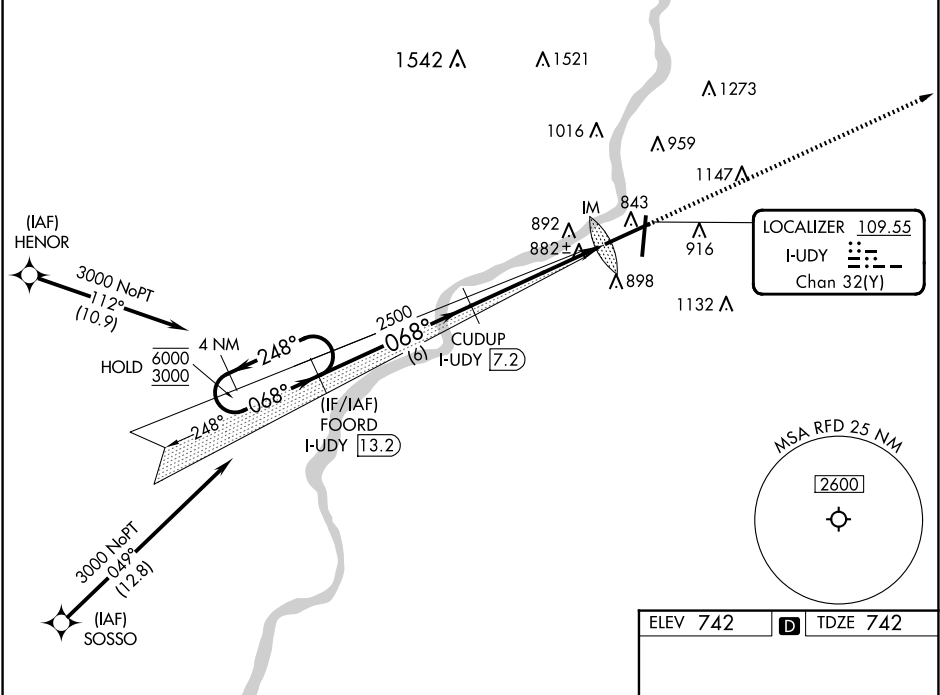
ALSF-2

MISSED APPROACH: Climb to 3000 on heading 068°. Expect RADAR vectors. (RADAR required).

ASR

CAT II: RVR 1000 authorized with specific OPSPEC, MSPEC, or LOA approval and use of autoland or HUD to touchdown.

ATIS 127.6	ROCKFORD APP CON 121.0 327.0	ROCKFORD TOWER 118.1 290.375	GND CON 121.9 290.375	CLNC DEL 119.25
---------------	---------------------------------	---------------------------------	--------------------------	--------------------



4 NM Holding Pattern

FOORD I-UDY 13.2

CUDUP I-UDY 7.2

IM 842

3000

hdg 068°

6000 3000 248° 068° 068° 2500 1243'

GS 3.00° TCH 60

6 NM 5.3 NM

VGSI and ILS glidepath not coincident (VGSI Angle 3.00/TCH 69).

ELEV 742

TDZE 742

REIL Rwy 19 and 25

HIRL Rwy 1-19 and 7-25

TDZ/CL Rwy 1 and 7

CATEGORY	A	B	C	D
S-ILS 7	CAT II RA 114/12 100 DA 842			
S-ILS 7	CAT III RVR 06			

CATEGORY II & III ILS - SPECIAL AIRCREW & AIRCRAFT CERTIFICATION REQUIRED