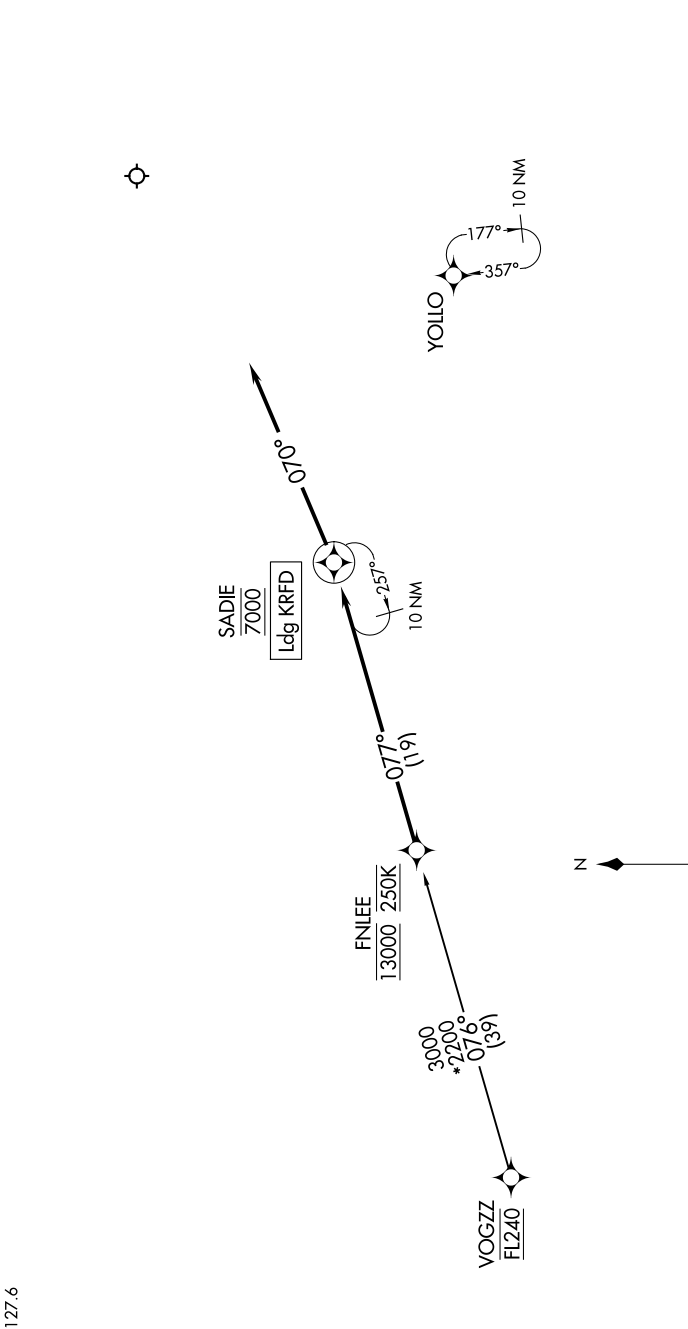


FNLEE ONE ARRIVAL (RNAV)

EC-3, 07 AUG 2025 to 04 SEP 2025

RNAV 1 - DME/DME/IRU or GPS.
RADAR required.

ROCKFORD APP CON
121.0 327.0
ATIS
127.6



ARRIVAL ROUTE DESCRIPTION

VOGZZ TRANSITION (VOGZZ.FNLEE1)

From FNLEE on track 077° to cross SADIE at 7000, then on track 070°.
Expect RADAR vectors to final approach course.

NOTE: Chart not to scale.

EC-3, 07 AUG 2025 to 04 SEP 2025