

VOR or TACAN RWY 22L

VORTAC SLI 115.7 Chan 104	APCH CRS 214°	Rwy Idg 8001 TDZE 36 Arpt Elev 36
---	-------------------------	--

[USA]
LOS ALAMITOS AAF (JOINT FORCES TRAINING BASE JFTB) (KSLI)

DME required

T * When ALS inop, increase CAT CD vis to 1 3/8 miles.
 ** Circling not authorized N of Rwy 4L-22R. Circling to Rwy 4R not authorized at night.

SALSF



MISSED APPROACH: Climb to 1800, then climbing left turn to 3100 via SLI VORTAC R-058 to AHEIM INT and hold, continue climb-in-hold.

ATIS
118.875 379.975

SOCAL APP CON
125.35 316.125


TOWER	
.85	251.15

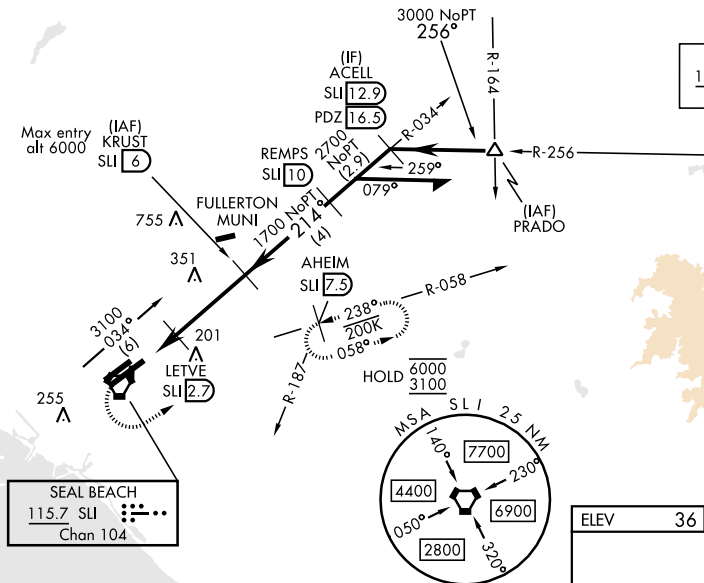
GND CON	
126.95	257.95

When local altimeter setting not received,
use John Wayne/Orange County altimeter setting.

POMONA
4 POM ☰☷☶☶
Chan 41

Procedure NA for arrivals at PRADO via V16-370 Eastbound.



PARADISE
112.2 PDZ 
Chap 59

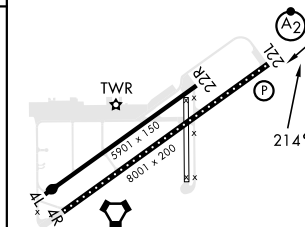


ELEV	36	TDZE	36
------	----	------	----

1800 ↑	3100 ↙ SLI R-058	AHEIM SLI 7.5
-----------	---------------------------	---------------------

VGSI and descent angles
not coincident
(VGSI Angle 3.00/TCH 75
SLI
VORTA

CATEGORY	A	B	C	D
S-22L*	500-1	464 (500-1)	500-1 $\frac{1}{8}$	464 (500-1 $\frac{1}{8}$)
 CIRCLING**	500-1	464 (500-1)	600-1 $\frac{1}{2}$ 564 (600-1 $\frac{1}{2}$)	600-2 564 (600-2)
KSNA-SNA (JOHN WAYNE/ORANGE COUNTY) ALTIMETER SETTING MINIMUMS				
S-22L	540-1	504 (600-1)	540-1 $\frac{3}{8}$	504 (600-1 $\frac{3}{8}$)
 CIRCLING**	540-1	504 (600-1)	640-1 $\frac{3}{4}$ 604 (700-1 $\frac{3}{4}$)	640-2 604 (700-2)



LOS ALAMITOS, CALIFORNIA
Amdt 8 11JUL24

LOS ALAMITOS AAF (JOINT FORCES TRAINING BASE JFTB) (KSLI)
33°47'N-118°03'W

VOR or TACAN RWY 22L

SW-3, 07 AUG 2025 to 04 SEP 2025

SW-3, 07 AUG 2025 to 04 SEP 2025