

TACAN RWY 32

VORTAC MMT	APCH CRS	Rwy Idg
113.2	328°	9012
Chan 79	TDZE	243
	Arpt Elev	254

[USAF]

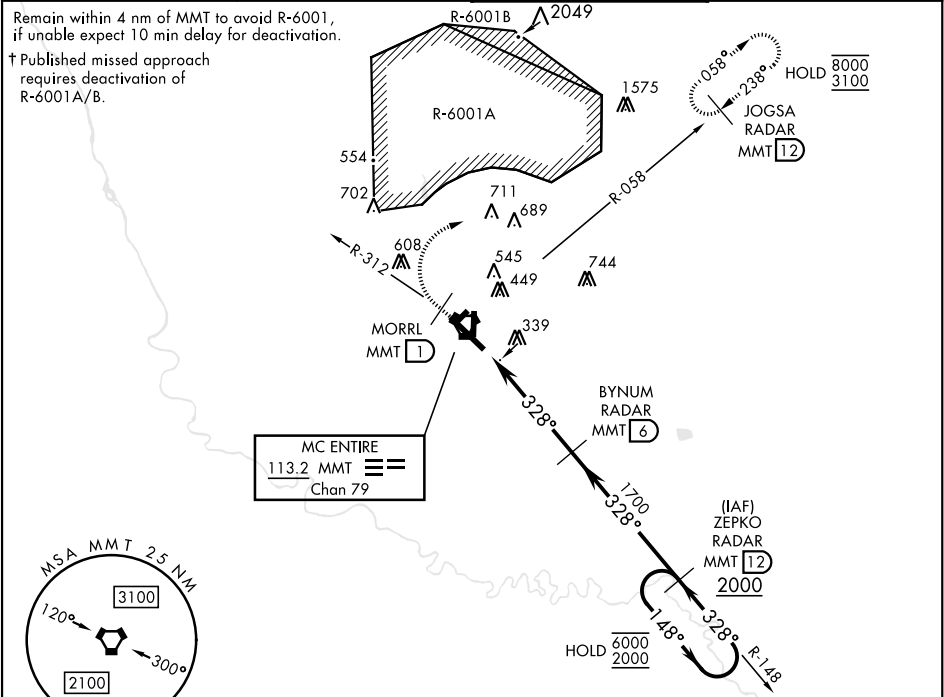
MC ENTIRE JNGB (KMMT)

✦ * When ALS inop, increase CAT AB RVR to 55, vis to 1 mile, CAT CDE RVR to 60, vis to 1½ miles.

ALSF-1

✦ MISSED APPROACH: Climb to 1100 direct MORRL/1 DME then climbing right turn to 3100 intercept MMT R-058 direct JOGSA/12 DME and hold.

ATIS ★	SHAW APP CON	TOWER ★	GND CON
327.05	125.4 318.1	132.4 (CTAF) 253.5	127.625 226.675



EMERG SAFE ALT 100 NM 3800

1100 MORRL (1) 3100 MMT R-058 JOGSA MMT (12)

MMT VORTAC HUTEM MMT (1.5) BYNUM RADAR MMT (6) ZEPKO RADAR MMT (12)

MMT 2.3 1700 148° 6000 328° 2000 2.67° TCH 48 4.5 NM

CATEGORY	A	B	C	D	E
S-32 *	640/24 397 (400-½)	640/40 397 (400-¾)			
CIRCLING	740-1 486 (500-1) 840-1 586 (600-1)	880-1¾ 626 (700-1¾) 940-2¼ 686 (700-2¼) 1020-2¾ 766 (800-2¾)			

Rwy 5H-23H, COPTER ONLY. HIRL Rwy 14-32 (1) MIRL Rwy 5H-23H (1) REIL Rwy 14

ELEV	254	TDZE	243
Knots	60	90	120 150 180
Min:Sec	4:30	3:00	2:15 1:48 1:30

TACAN RWY 32

SE-2, 07 AUG 2025 to 04 SEP 2025

SE-2, 07 AUG 2025 to 04 SEP 2025