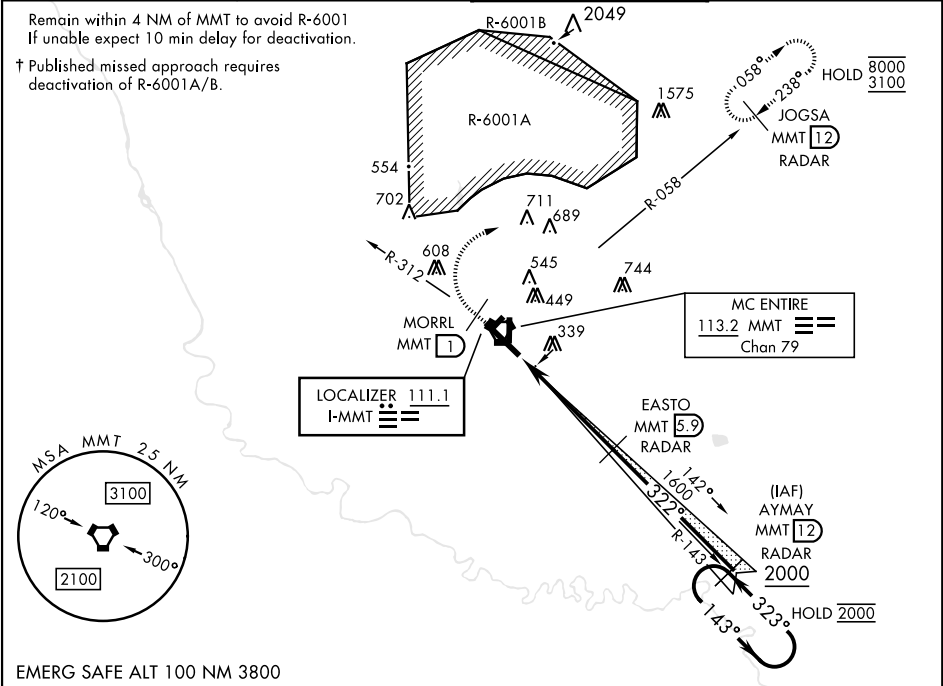


ILS or LOC/DME RWY 32

LOC I-MMT 111.1	APCH CRS 322°	Rwy Idg TDZE Arpt Elev 9012 243 254	[USAF]	MC ENTIRE JNGB (KMMT)
* When ALS inop, increase RVR to 40, and vis to ¾ mile. ** When ALS inop, increase RVR to 55, and vis to 1 mile.			ALSF-1 	† MISSED APPROACH: Climb to 1100 direct MORRL/ 1 DME then climbing right to 3100 intercept MMT R-058 direct JOGSA/12 DME and hold.

ATIS ★ 327.05	SHAW APP CON 125.4 318.1	TOWER ★ 132.4 (CTAF) 253.5	GND CON 127.625 226.675
-------------------------	------------------------------------	--------------------------------------	-----------------------------------



EMERG SAFE ALT 100 NM 3800

1100 MORRL 1	3100 MMT R-058	JOGSA RADAR MMT 12	AYMAY MMT 12 RADAR	EASTO MMT 5.9 RADAR	EGULE MMT 1.4	GS 2.50° TCH 48	ELEV 254	TDZE 243
CATEGORY	A	B	C	D	E		Rwy 5H-23H, COPTER ONLY. HIRL Rwy 14-32 MIRL Rwy 5H-23H REIL Rwy 14 FAF to MAP 4.5 NM Knots 120 140 160 180 200 Min:Sec 2:15 1:56 1:41 1:30 1:21	
S-ILS 32 *	443/24		200	(200-½)				
S-LOC 32 **	620/24 377 (400-½)		620/35 377 (400-¾)					
CIRCLING	740-1 486 (500-1)	840-1 586 (600-1)	880-1¾ 626 (700-1¾)	940-2¼ 686 (700-2¼)	1020-2¾ 766 (800-2¾)			

ILS or LOC/DME RWY 32

SE-2, 07 AUG 2025 to 04 SEP 2025

SE-2, 07 AUG 2025 to 04 SEP 2025