

WAAS CH 50320 W21A	APP CRS 209°	Rwy Ldg 4001 TDZE 750 Apt Elev 751
--	------------------------	---

RNAV (GPS) RWY 21
DAVENPORT MUNI (DVN)

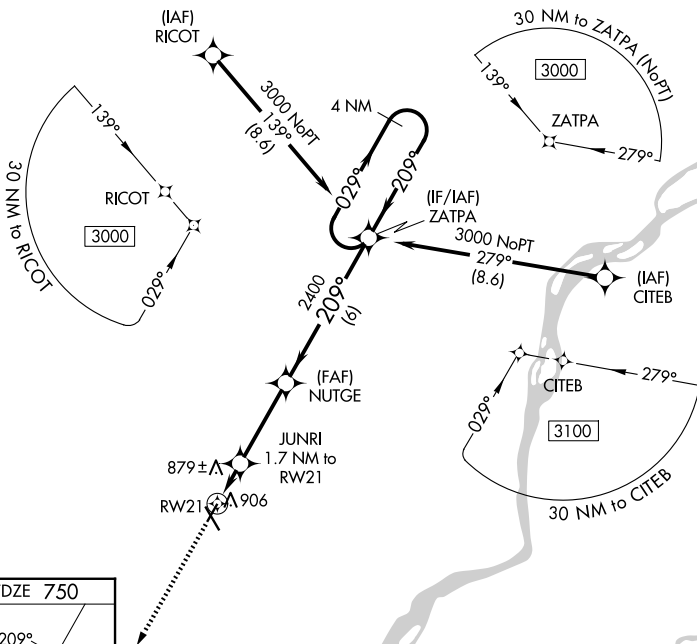
RNP APCH.



For uncompensated Baro-VNAV systems, LNAV/VNAV NA below -16°C (4°F) or above 54°C (130°F).
Rwy 21 helicopter visibility reduction below 1 SM NA.

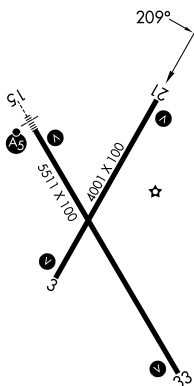
MISSED APPROACH: Climb to 3000 direct YODUP and hold.

ASOS 120.175	QUAD CITY APP CON* 125.95 257.8	CLNC DEL 118.35	UNICOM 123.0 (CTAF) ①
------------------------	---	---------------------------	---------------------------------



MISSED APCH FIX

ELEV 751	TDZE 750
----------	----------



MIRL Rwy 3-21 **L**
HIRL Rwy 15-33 **L**
REIL Rwys 3, 21, and 33 **L**

3000
↑
YODUP

VGSI and RNAV glidepath not coincident
(VGSI Angle 3.00/TCH 45).

ZATPA

4 NM
Holding Pattern

*RNAV only.

JUNRI
1.7 NM to
RW21

RW21

NUTGE
2400

209°

029° → 3000

← 209°

1340*

2400

GP 3.00°
TCH 52

1.7 3.3 NM 6 NM

CATEGORY	A	B	C	D
LPV DA	1046-1		296 (300-1)	
LNAV/VNAV DA	1184-1½		434 (500-1½)	
LNAV MDA	1180-1	430 (500-1)	1180-1¼	430 (500-1¼)
CIRCLING	1220-1	469 (500-1)	1300-1½ 549 (600-1½)	1320-2 569 (600-2)

RNAV (GPS) RWY 21