

WAAS CH 49120 W33A	APP CRS 329°	Rwy Ldg TDZE 89 Apt Elev 99
--	------------------------	---

RNAV (GPS) RWY 33L

LONG ISLAND MAC ARTHUR (ISP)

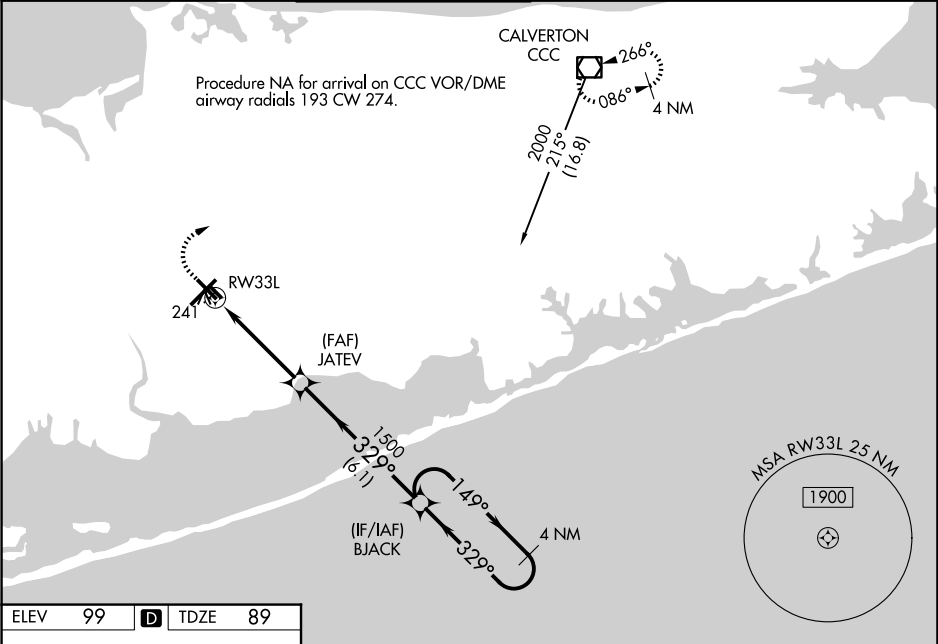
▼

⚠

For uncompensated Baro-VNAV systems, LNAV/VNAV NA below -14°C (7°F) or above 54°C (130°F).
DME/DME RNP-0.3 NA. When local altimeter setting not received, use Shirley altimeter setting and increase LPV DA to 367 feet, LNAV/VNAV DA to 440 feet and LPV and LNAV/VNAV visibility all Cats ½ mile, all MDA 40 feet, increase LNAV Cats C/D visibility ½ mile, and Circling Cats C/D visibility ¼ mile. VDP and Baro-VNAV NA when using Shirley altimeter setting. Helicopter visibility reduction below ¾ SM NA.

MISSED APPROACH:
Climb to 600 then climbing right turn to 2000 direct CCC VOR/DME and hold.

ATIS 120.725	NEW YORK APP CON 120.05 343.75	LONG ISLAND TOWER* 119.3 (CTAF) 0335.5	GND CON 135.3	CLNC DEL 121.85	UNICOM 122.95
------------------------	--	--	-------------------------	---------------------------	-------------------------



ELEV 99	D	TDZE 89
---------	----------	---------

MIRL Rwy 15R-33L
HIRL Rwy 6-24

600 2000 CCC

VGSI and RNAV glidepath not coincident (VGSI Angle 3.00/TCH 50).

4 NM Holding Pattern

*LNAV only.

*1.1 NM to RWY 33L

JATEV 1500

149° 2000

329°

GP 3.00° TCH 45

CATEGORY	A	B	C	D
LPV DA		339-7/8	250 (300-7/8)	
LNAV/VNAV DA		412-1 1/8	323 (400-1 1/8)	
LNAV MDA	500-1	411 (500-1)	500-1 1/4	411 (500-1 1/4)
CIRCLING	600-1 501 (600-1)	660-1 561 (600-1)	660-1 1/2 561 (600-1 1/2)	960-2 3/4 861 (900-2 3/4)