

WAAS CH 53620 W15A	APP CRS 149°	Rwy Ldg 5186 TDZE 99 Apt Elev 99
--	------------------------	---

RNAV (GPS) RWY 15R

LONG ISLAND MAC ARTHUR (ISP)

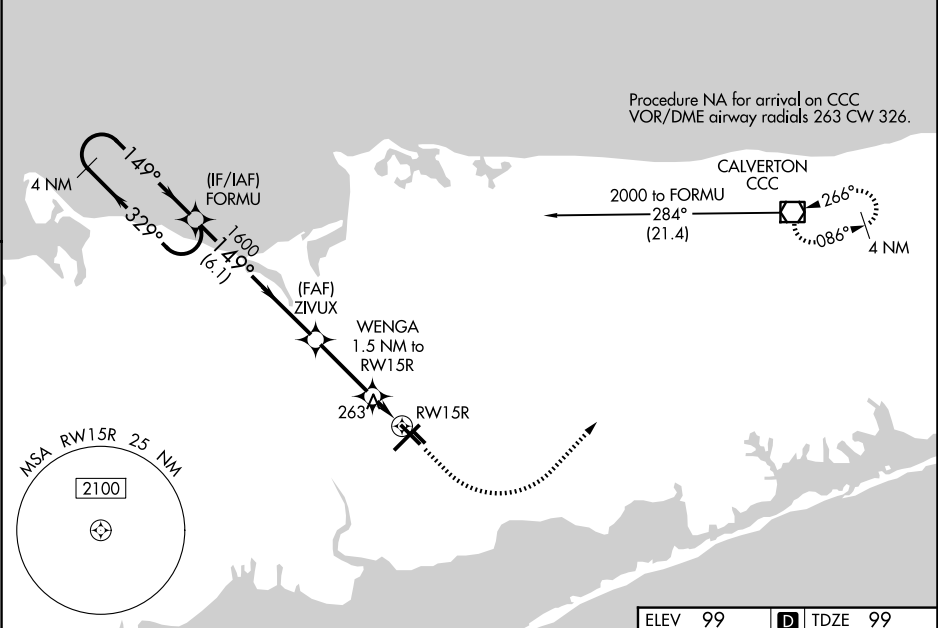
▼

▲

Baro-VNAV NA when using Shirley altimeter setting. For uncompensated Baro-VNAV systems, procedure NA below -14°C (7°F) or above 46°C (115°F). DME/DME RNP-0.3 NA. When local altimeter setting not received, use Shirley altimeter setting and increase LPV DA to 442 feet, LNAV/VNAV DA to 575 feet and LNAV/VNAV visibility all Cats ½ mile; all MDAs 40 feet, LNAV Cats C/D visibility ⅓ mile, and Circling Cats C/D visibility ¼ mile. Helicopter visibility reduction below ¾ SM NA.

MISSED APPROACH: Climb to 600 then climbing left turn to 2000 direct CCC VOR/DME and hold.

ATIS 120.725	NEW YORK APP CON 120.05 343.75	LONG ISLAND TOWER* 119.3 (CTAF) 0 335.5	GND CON 135.3	CLNC DEL 121.85	UNICOM 122.95
------------------------	--	---	-------------------------	---------------------------	-------------------------



ELEV 99 D TDZE 99				
VGSI and RNAV glidepath not coincident (VGSI Angle 3.10/TCH 46).				
4 NM Holding Pattern FORMU				
2000 ← 329° 149° →				
GP 3.10° TCH 46				
ZIVUX 1600 WENGA 1.5 NM to RWY 15R				
6.1 NM 2.9 NM 1.5 NM				
*640				
CATEGORY	A	B	C	D
LPV DA	414-1		315 (400-1)	
LNAV/VNAV DA	547-1⅜		448 (500-1⅜)	
LNAV MDA	520-1	421 (500-1)	520-1¼	421 (500-1¼)
CIRCLING	600-1 501 (600-1)	660-1 561 (600-1)	660-1½ 561 (600-1½)	960-2¾ 861 (900-2¾)
MIRL Rwy 15R-33L 0 HIRL Rwy 6-24 0				