

| | | | |
|--|------------------------|-----------------------------|---------------------------------------|
| LOC/DME I-SP 108.3 Chan 20 | APP CRS 059° | Rwy Ldg TDZE Apt Elev | 7006 94 99 |
|--|------------------------|-----------------------------|---------------------------------------|

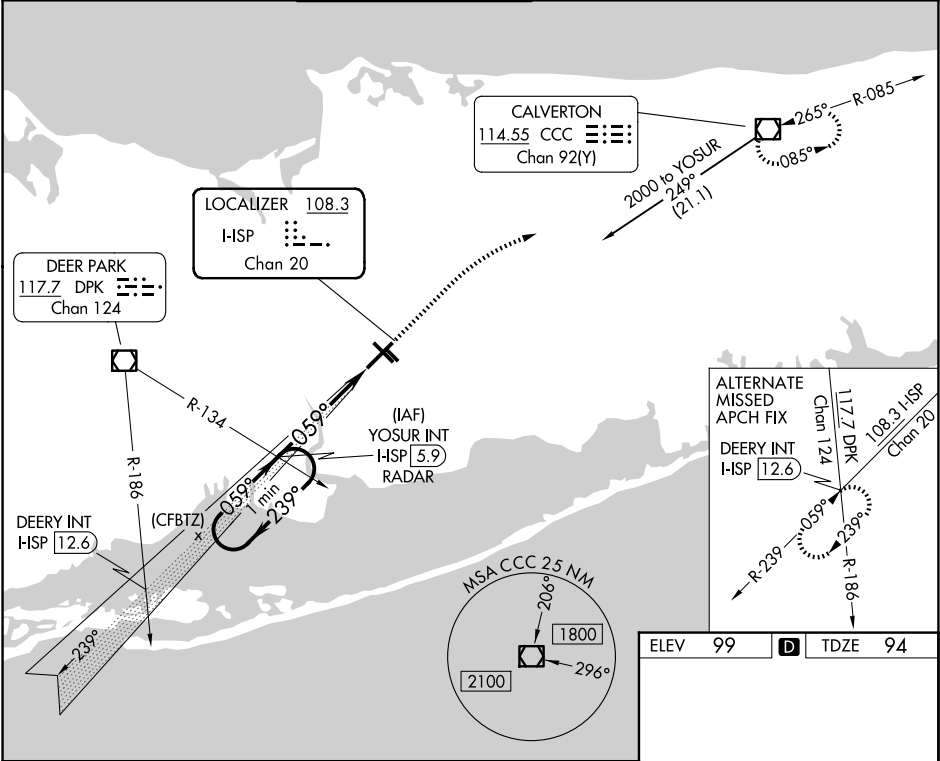
ILS RWY 6 (SA CAT I & II)
LONG ISLAND MAC ARTHUR (ISP)

Procedure NA when tower closed. SA CAT I: Requires specific OPSPEC, MSPEC, or LOA approval and use of HUD to DH.
SA CAT II: Reduced lighting: Requires specific OPSPEC, MSPEC, or LOA approval and use of autoland or HUD to touchdown.

MALSR

MISSED APPROACH: Climb to 600 then climbing right turn to 2000 direct CCC VOR/DME and hold.

| | | | | | |
|------------------------|--|--|-------------------------|---------------------------|-------------------------|
| ATIS 120.725 | NEW YORK APP CON 120.05 343.75 | LONG ISLAND TOWER* 119.3 (CTAF) 0335.5 | GND CON 135.3 | CLNC DEL 121.85 | UNICOM 122.95 |
|------------------------|--|--|-------------------------|---------------------------|-------------------------|



One Minute Holding Pattern

YOSUR INT I-SP 5.9 RADAR

1600 1600 1600

239° 059°

GS 3.00° TCH 52

4.6 NM 979'

| | | | | |
|----------|--------------------------------|---|---|---|
| CATEGORY | A | B | C | D |
| S-ILS 6 | SA CAT I RA 162/14 150 DA 244 | | | |
| S-ILS 6 | SA CAT II RA 111/12 100 DA 194 | | | |

SA CATEGORY I & II ILS SPECIAL AIRCREW & AIRCRAFT CERTIFICATION REQUIRED

MIRL Rwy 15R-33L

HIRL Rwy 6-24

NE-2, 07 AUG 2025 to 04 SEP 2025

NE-2, 07 AUG 2025 to 04 SEP 2025