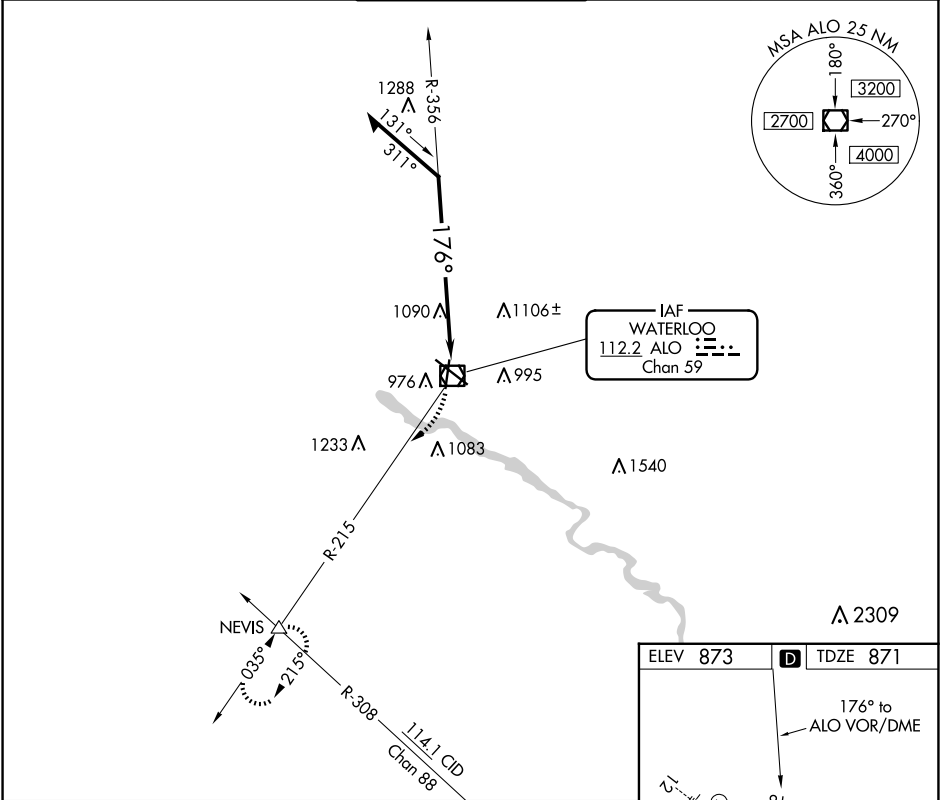


VOR/DME ALO	APP CRS	Rwy Idg	6003
112.2	176°	TDZE	871
Chan 59		Apt Elev	873

VOR RWY 18
WATERLOO RGNL (ALO)

<div><div></div><div></div></div> <div>Rwy 18 helicopter visibility reduction below 3/4 SM NA.</div>	MISSED APPROACH: Climbing right turn to 2800 on ALO VOR/DME R-215 to NEVIS INT and hold.
--	--

ATIS 120.65	WATERLOO APP CON ★ 118.9 251.15	WATERLOO TOWER ★ 125.075 (CTAF) 257.8	GND CON 121.9 269.1	UNICOM 122.95
----------------	------------------------------------	--	------------------------	------------------



Remain within 10 NM				
2600				
356°				
176°				
ALO 2.7				
2.1 NM				
CATEGORY	A	B	C	D
S-18	1600-1	729 (800-1)	1600-2	729 (800-2)
CIRCLING	1600-1	727 (800-1)	1600-2	1600-2 1/4
			727 (800-2)	727 (800-2 1/4)

