

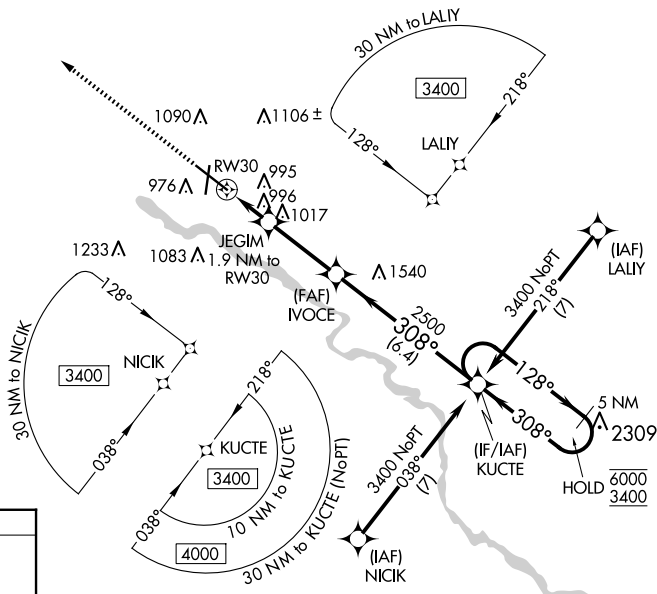


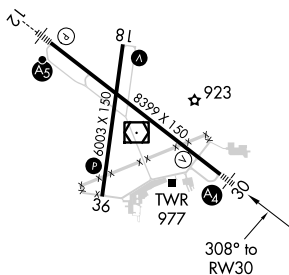
WAAS CH 78201 W30A	APP CRS 308°	Rwy Idg 8399 TDZE 868 Apt Elev 873
--	------------------------	---

RNAV (GPS) RWY 30
WATERLOO RGNL (ALO)

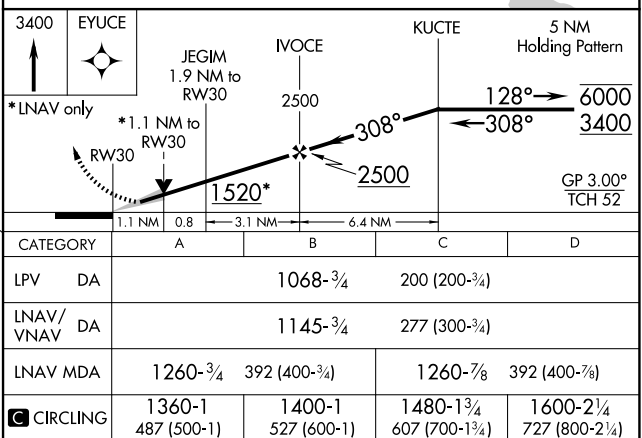
RNP APCH.			MISSED APPROACH: Climb to 3400 direct EYUCE and hold.
 For uncompensated Baro-VNAV systems, LNAV/VNAV NA below -20°C or above 54°C. Inop table does not apply LPV all Cats. For inop ALS, increase LNAV/VNAV all Cats visibility to ½ SM.			
ATIS 120.65	WATERLOO APP CON ★ 118.9 251.15	WATERLOO TOWER ★ 125.075 (CTAF) 0 257.8	GND CON 121.9 269.1
		UNICOM 122.95	



ELEV 873	D	TDZE 868
----------	----------	----------



HIRL Rwy 12-30 **L**
MIRL Rwy 18-36 **L**
REIL Rwy 18 and 36



RNAV (GPS) RWY 30