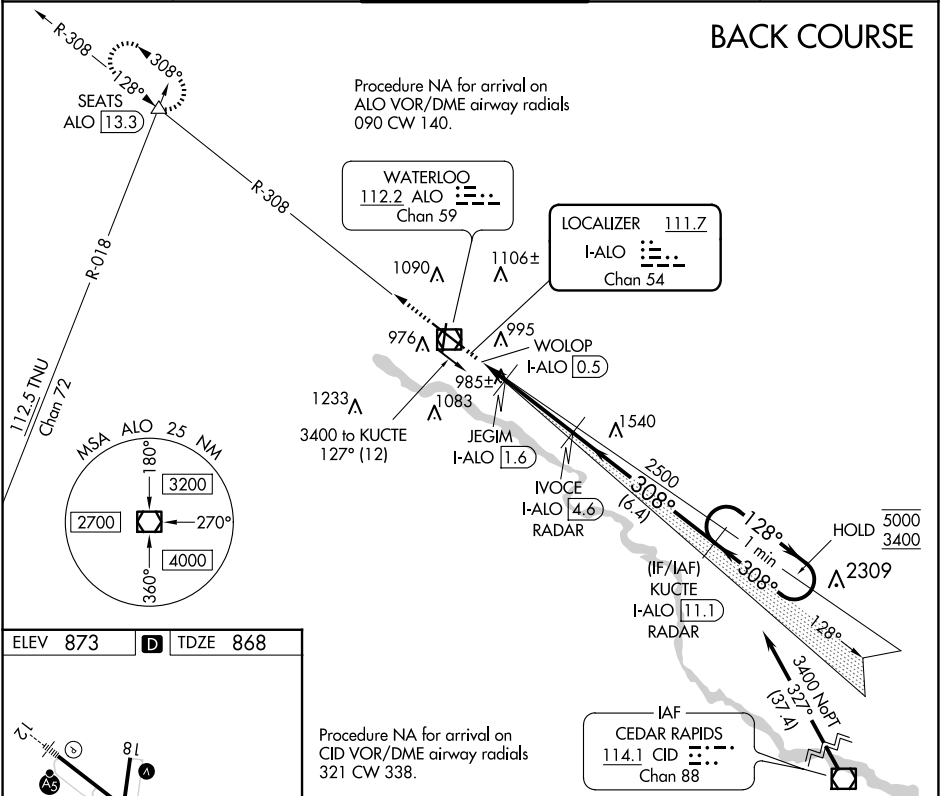


LOC/DME I-ALO <b>111.7</b> Chan <b>54</b>	APP CRS <b>308°</b>	Rwy Idg TDZE Apt Elev	<b>8399</b> <b>868</b> <b>873</b>
---	------------------------	-----------------------------	---

LOC BC RWY 30  
WATERLOO RGNL (ALO)

DME required.		MALS	MISSED APPROACH: Climb to 3500 on ALO VOR/DME R-308 to SEATS INT/ALO 13.3 DME and hold.	
ATIS <b>120.65</b>	WATERLOO APP CON* <b>118.9 251.15</b>	WATERLOO TOWER* <b>125.075 (CTAF) 0 257.8</b>	GND CON <b>121.9 269.1</b>	UNICOM <b>122.95</b>



ELEV 873	D	TDZE 868
HIRL Rwy 12-30 MIRL Rwy 18-36 REIL Rwy 18 and 36		
FAF to MAP 4.1 NM		
Knots	60	90 120 150 180
Min:Sec	4:06	2:44 2:03 1:38 1:22

SEATS ALO R-308		Disregard glide slope indications.		KUCTE I-ALO 11.1 RADAR		One Minute Holding Pattern	
I-ALO DME ANTENNA		JEGIM I-ALO 1.6		IVOCE I-ALO 4.6 RADAR		KUCTE I-ALO 11.1 RADAR	
WOLOP I-ALO 0.5		TCH 52		2500		128° 5000 ← 308° 3400	
1520		3.00°		6.4 NM		Use I-ALO DME when on the localizer course.	
CATEGORY		A		B		C	
S-LOC 30		1240-3/4		372 (400-3/4)			
CIRCLING		1360-1 487 (500-1)		1400-1 527 (600-1)		1480-1 3/4 607 (700-1 3/4)	
						1600-2 1/4 727 (800-2 1/4)	