

WAAS CH 90199 W28A	APP CRS 288°	Rwy Idg TDZE 341 Apt Elev 342
--	------------------------	---

RNAV (GPS) RWY 28

CAPE GIRARDEAU RGNL (CGI)

RNP APCH - GPS.

▼

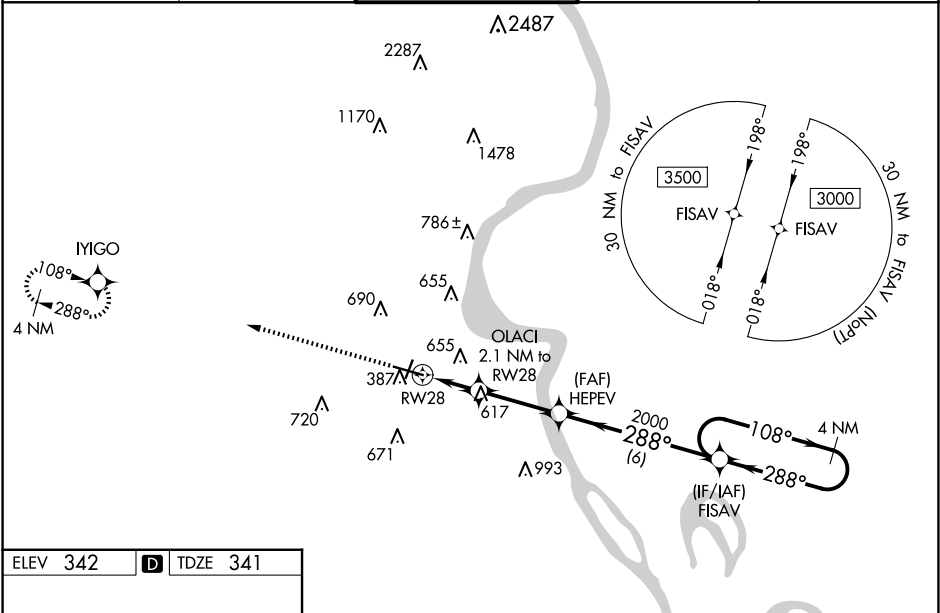
⚠

When local altimeter setting not received, use Cairo altimeter setting and increase LPV DA to 771 feet and all visibilities $\frac{1}{2}$ SM. Increase LNAV/VNAV DA to 896 feet; increase all MDAs 60 feet and LNAV and Circling visibility Cats C/D $\frac{1}{4}$ SM. VDP NA when using Cairo Rgnl altimeter setting. Rwy 28 helicopter visibility reduction below $\frac{3}{4}$ SM NA. For inop ALS, increase LPV Cat A/B visibility to $\frac{1}{2}$ SM. Inop table does not apply to LNAV/VNAV all Cats. For inop ALS when using Cairo altimeter setting, increase LPV Cat A/B visibility to $\frac{1}{2}$ SM. Baro-VNAV NA.

ODALS

MISSED APPROACH:
Climb to 3000 direct
IYIGO and hold.

ASOS 120.55	MEMPHIS CENTER 133.65 292.15	CAPE GIRARDEAU TOWER ★ 125.525 (CTAF)	GND CON 124.7	UNICOM 122.95
-----------------------	--	---	-------------------------	-------------------------



ELEV 342 TDZE 341

MIRL Rwy 2-20
HIRL Rwy 10-28

	3000	YIGO	HEPEV	FISAV	4 NM Holding Pattern
			OLACI 2.1 NM to RW28		
			1.6 NM to RW28		
			1040	2000	
			288°	108°	
			288°	288°	
			1.6 NM	0.5 NM	3 NM
			6 NM		
CATEGORY	A	B	C	D	
LPV DA	723-1 382 (400-1)				
LNAV/VNAV DA	848-1 $\frac{3}{8}$ 507 (600-1 $\frac{3}{8}$)				
LNAV MDA	880- $\frac{3}{4}$	539 (600- $\frac{3}{4}$)	880-1 $\frac{3}{8}$	539 (600-1 $\frac{3}{8}$)	
CIRCLING	880-1 538 (600-1)	960-1 618 (700-1)	1000-1 $\frac{3}{4}$ 658 (700-1 $\frac{3}{4}$)	1080-2 $\frac{1}{4}$ 738 (800-2 $\frac{1}{4}$)	

NC-3, 07 AUG 2025 to 04 SEP 2025

NC-3, 07 AUG 2025 to 04 SEP 2025