

WAAS CH 93832 W02A	APP CRS 023°	Rwy Idg 3997 TDZE 342 Apt Elev 342
--	------------------------	---

RNAV (GPS) RWY 2
CAPE GIRARDEAU RGNL (CGI)

RNP APCH - GPS.

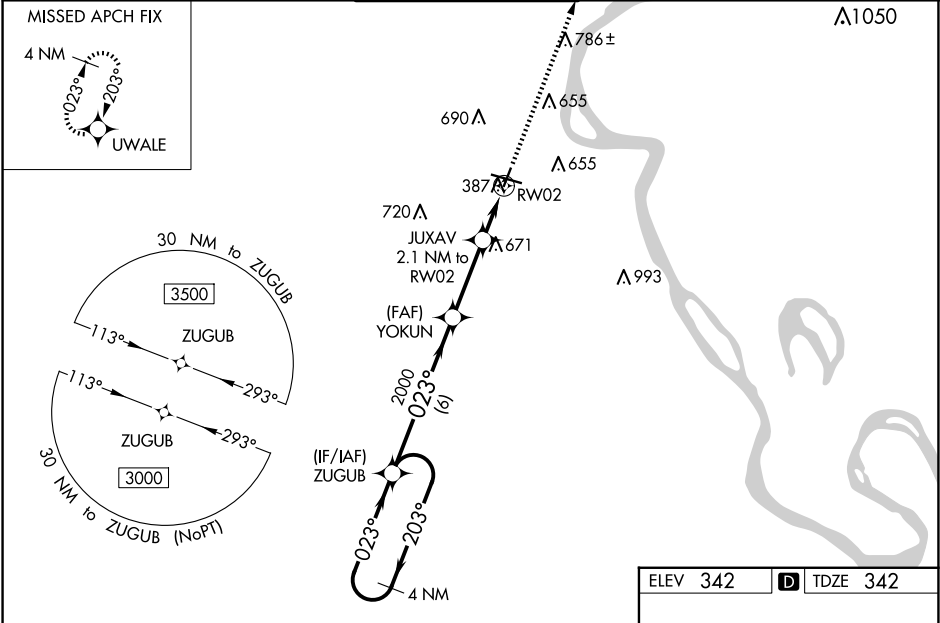
▼

⚠

For uncompensated Baro-VNAV systems, LNAV/VNAV NA below -17°C or above 54°C. When local altimeter setting not received, use Cairo altimeter setting and increase LPV DA to 849 feet, LNAV/VNAV DA to 905 feet, and all visibilities ¼ SM. Increase all MDAs 60 feet and LNAV visibility Cat C/D ⅓ SM, and Circling visibility Cat C/D ¼ SM. Rwy 2 helicopter visibility reduction below ¾ SM NA. Baro-VNAV and VDP NA when using Cairo Rgnl altimeter setting.

MISSED APPROACH: Climb to 3500 direct UWALE and hold, continue climb-in-hold to 3500.

ASOS 120.55	MEMPHIS CENTER 133.65 292.15	CAPE GIRARDEAU TOWER ★ 125.525 (CTAF) 0	GND CON 124.7	UNICOM 122.95
-----------------------	--	---	-------------------------	-------------------------



NC-3, 07 AUG 2025 to 04 SEP 2025

NC-3, 07 AUG 2025 to 04 SEP 2025