

RNAV (GPS) RWY 10  
CAPE GIRARDEAU RGNL (CGI)

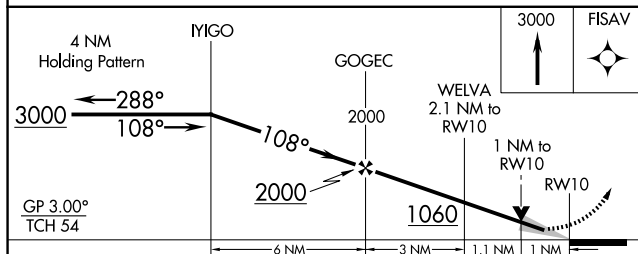
**T** For uncompensated Baro-VNAV systems, LNAV/VNAV NA below -17°C or above 54°C. When local altimeter setting not received, use Cairo altimeter setting and increase LPV DA to 585 feet, LNAV/VNAV DA to 761 feet, and all visibilities ½ SM. Increase all MDAs 60 feet and LNAV Cat C/D visibility ½ SM, and Circling Cats C/D visibility to ¼ SM. Baro-VNAV and VDP NA when using Cairo Rgnl altimeter setting. For inop ALS, increase LNAV/VNAV visibility all Cats and LNAV visibility Cat C/D to 1 SM. For inop ALS, when using Cairo altimeter setting, increase LNAV/VNAV all Cats and LNAV Cat C/D visibility to 1 SM.




**MISSED APPROACH:**  
Climb to 3000 direct  
FISAV and hold.

NC-3, 07 AUG 2025 to 04 SEP 2025

NC-3, 07 AUG 2025 to 04 SEP 2025



CATEGORY	A	B	C	D
LPV DA	537-½ 200 (200-½)			
LNAV/ VNAV DA	713-⅝ 376 (400-⅝)			
LNAV MDA	700-½ 363 (400-½)		700-⅝ 363 (400-⅝)	
 CIRCLING	880-1 538 (600-1)	960-1 618 (700-1)	1000-1¾ 658 (700-1¾)	1080-2¼ 738 (800-2¼)

