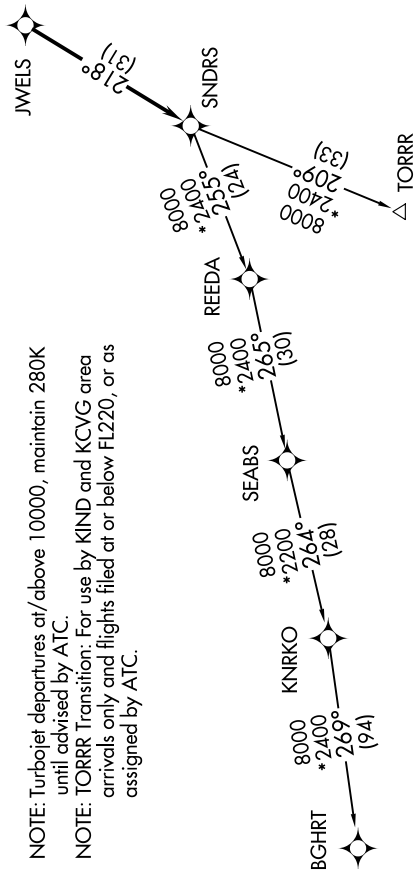


DETROIT/GROSSE ILE, MICHIGAN
GROSSE ILE MUNI (ONZ)

DEPARTURE ROUTE DESCRIPTION	
<u>TAKEOFF RUNWAY 4:</u>	Climb on heading 037° to 1200 then as assigned by ATC, thence....
<u>TAKEOFF RUNWAY 17:</u>	Climb on heading 174° or as assigned by ATC, thence....
<u>TAKEOFF RUNWAY 22:</u>	Climb on heading 217° or as assigned by ATC, thence....
<u>TAKEOFF RUNWAY 35:</u>	Climb on heading 006° to 1800 then as assigned by ATC, thence....
for RADAR vectors to JWEELS, then on track 218° to SNDRS, then on (transition). Maintain ATC assigned altitude, expect filed altitude 10 minutes after departure.
	<u>BGHRT TRANSITION (SNDRS3.BGHRT):</u>
	<u>TORRR TRANSITION (SNDRS3.TORRR):</u>



NOTE: Chart not to scale.