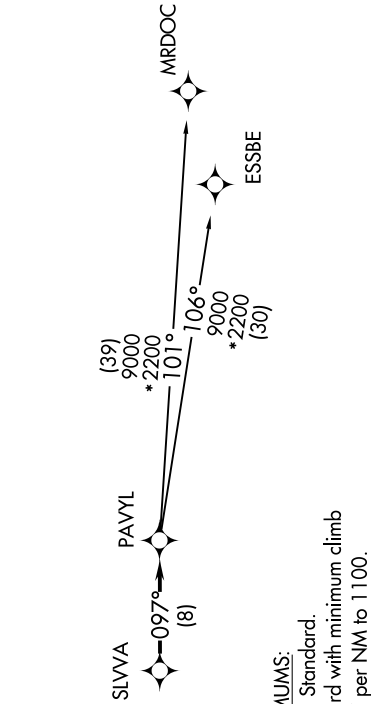


EC-1, 07 AUG 2025 to 04 SEP 2025

AWOS-3
119.675
CTAF
123.0
DETROIT DEP CON
134.3 284.0

NOTE: Jet departures at /above 10000, maintain 280K until advised by ATC.



NOTE: Chart not to scale.

DEPARTURE ROUTE DESCRIPTION

- TAKEOFF RUNWAY 4: Climb on heading 037° to 1200 then as assigned by ATC, thence....
- TAKEOFF RUNWAY 17: Climb on heading 174° or as assigned by ATC, thence....
- TAKEOFF RUNWAY 22: Climb on heading 217° or as assigned by ATC, thence....
- TAKEOFF RUNWAY 35: Climb on heading 006° to 1800 then as assigned by ATC, thence....

....for RADAR vectors to SLVVA, then on track 097° to PAVYL, then on (transition). Maintain 17000 or as assigned by ATC, expect filed altitude 10 minutes after departure.

ESSBE TRANSITION (PAVYL3 ESSBE):
MRDOC TRANSITION (PAVYL3.MRDOC):

EC-1, 07 AUG 2025 to 04 SEP 2025