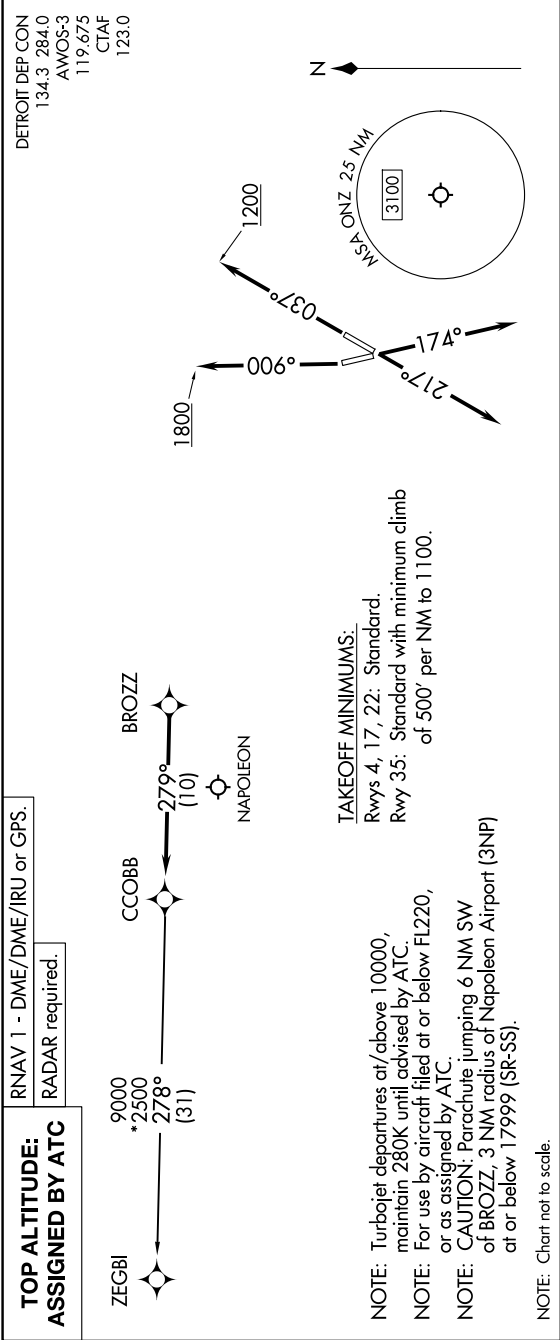


EC-1, 07 AUG 2025 to 04 SEP 2025



DEPARTURE ROUTE DESCRIPTION

TAKEOFF RUNWAY 4: Climb on heading 037° to 1200 then as assigned by ATC, thence....  
TAKEOFF RUNWAY 17: Climb on heading 174° or as assigned by ATC, thence....  
TAKEOFF RUNWAY 22: Climb on heading 217° or as assigned by ATC, thence....  
TAKEOFF RUNWAY 35: Climb on heading 006° to 1800 then as assigned by ATC, thence....  
.....for RADAR vectors to BROZZ, then on track 279° to CCOBB, then on (transition).  
Maintain ATC assigned altitude, expect filed altitude 10 minutes after departure.

ZEGBI TRANSITION (CCOBB3.ZEGBI):

EC-1, 07 AUG 2025 to 04 SEP 2025