

VORTAC LAL	APP CRS	Rwy Idg	8500
116.0	096°	TDZE	132
Chan 107		Apt Elev	142

VOR RWY 10

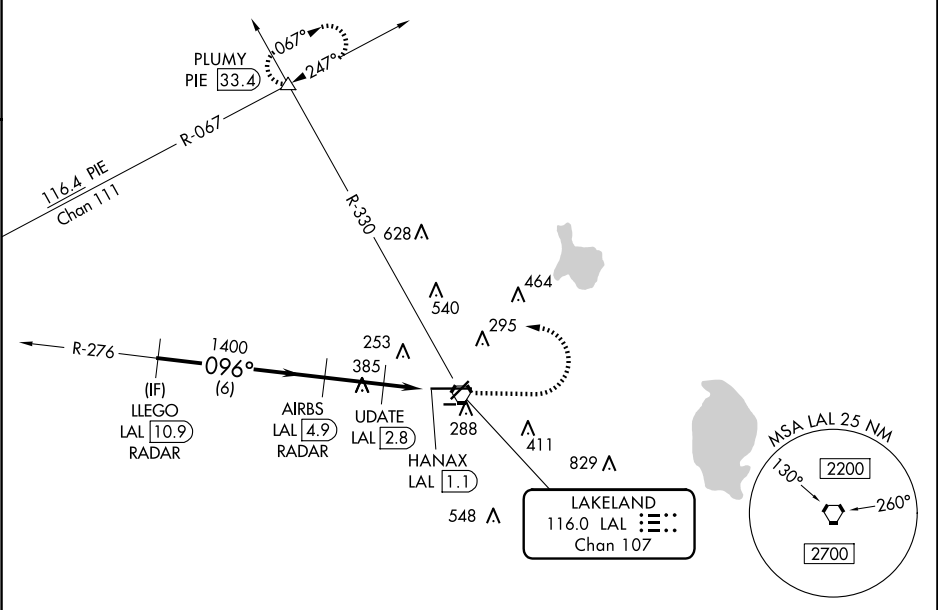
LAKELAND LINDER INTL (LAL)

RADAR required for procedure entry. DME or RADAR required.

ALSIF-2

MISSED APPROACH: Climb to 1000 then climbing left turn to 2000 on heading 294° and on LAL VORTAC R-330 to PLUMY INT/ PIE 33.4 DME and hold.

ATIS	TAMPA APP CON	LAKELAND TOWER	GND CON
118.025	120.65 290.3	124.5 236.775	121.4



ELEV 142

TDZE 132

LLEGO LAL 10.9 RADAR

AIRBS LAL 4.9 RADAR

UPDATE LAL 2.8

HANAX LAL 1.1

1000

2000

hdg 294°

LAL R-330

PLUMY

2000

1400

700

2.98°

TCH 52

6 NM

2.1 NM

0.7

1.1

CATEGORY	A	B	C	D
S-10	700/24	568 (600-½)	700-1¼	568 (600-1¼)
CIRCLING	700-1	558 (600-1)	720-1½ 578 (600-1½)	840-2¼ 698 (700-2¼)

UPDATE FIX MINIMUMS

S-10	540/24	408 (400-½)	540/40	408 (400-¾)
CIRCLING	600-1 458 (500-1)	660-1 518 (600-1)	720-1½ 578 (600-½)	840-2¼ 698 (700-2¼)

TDZ/CL Rwy 10

HIRL Rwy 5-23 and 10-28

FAF to MAP 3.8 NM

Knots	60	90	120	150	180
Min:Seq	3:48	2:32	1:54	1:31	1:16