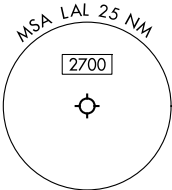
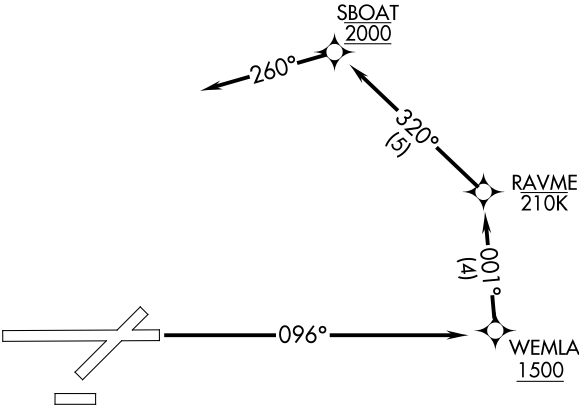


TAMPA DEP CON
120.65 290.3

RNAV 1 - GPS.

TOP ALTITUDE:
2000

TAKEOFF MINIMUMS
Rwy 5, 8, 23, 26, 28: NA-ATC.
Rwy 10: Standard.



NOTE: Chart not to scale.

DEPARTURE ROUTE DESCRIPTION

TAKEOFF RUNWAY 10: Climbing on heading 096° direct WEMLA, cross WEMLA at or above 1500, then climb and maintain 2000 on track 001° to RAYME, then on track 320° to SBOAT, then on track 260°.

SE-3, 07 AUG 2025 to 04 SEP 2025

SE-3, 07 AUG 2025 to 04 SEP 2025