

WAAS CH 77805 W23A	APP CRS 231°	Rwy Idg 5000 TDZE 141 Apt Elev 142
--	------------------------	---

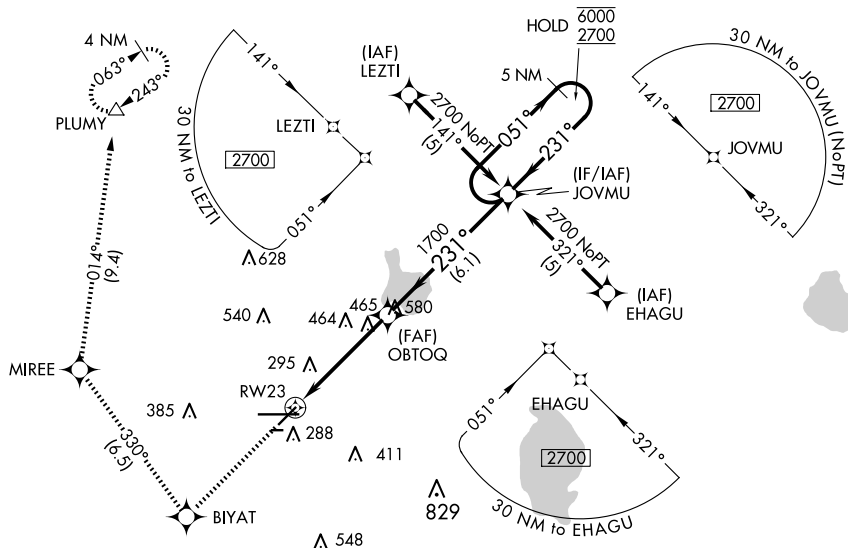
RNAV (GPS) RWY 23
LAKELAND LINDER INTL (LAL)

RNP APCH.

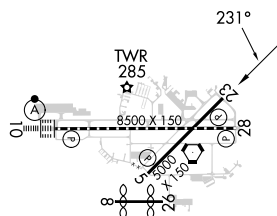
V For uncompensated Baro-VNAV systems, LNAV/VNAV NA below -15°C or above 54°C. When local altimeter setting not received, use Plant City altimeter setting: increase LPV DA to 444 feet; increase LNAV/VNAV DA to 540 feet; increase all MDAs 20 feet and LNAV Cat C/D and Circling Cat C visibility $\frac{1}{8}$ SM. Baro-VNAV and VDP NA when using Plant City altimeter setting. Rwy 23 helicopter visibility reduction below $\frac{3}{4}$ SM NA. Circling NA to Rwy 8 and 26.

MISSED APPROACH: Climb to 2000 direct BIYAT and right turn on track 330° to MIREE then on track 014° to PLUMY and hold.

ATIS 118.025	TAMPA APP CON 120.65 290.3	LAKELAND TOWER 124.5 236.775	GND CON 121.4
-----------------	-------------------------------	---------------------------------	------------------



ELEV 142	D	TDZE 141
----------	----------	----------



TDZ/CL Rwy 10
HIRL Rwy 5-23 and 10-28

2000	BIYAT		MIREE		PLUMY		VGSI and RNAV glidepath not coincident (VGSI Angle 3.00/TCH 46).
CATEGORY		A		B		C	D
LPV	DA	426-1 285 (300-1)					
RNAV/ VNAV	DA	522-1¼ 381 (400-1¼)					
RNAV MDA		720-1 579 (600-1)			720-1½ 579 (600-1½)		720-1¾ 579 (600-1¾)
CIRCLING		720-1 578 (600-1)			720-1½ 578 (600-1½)		840-2¼ 698 (700-2¼)

LAKELAND LINDER INTL (LAL)
RNAV (GPS) RWY 23