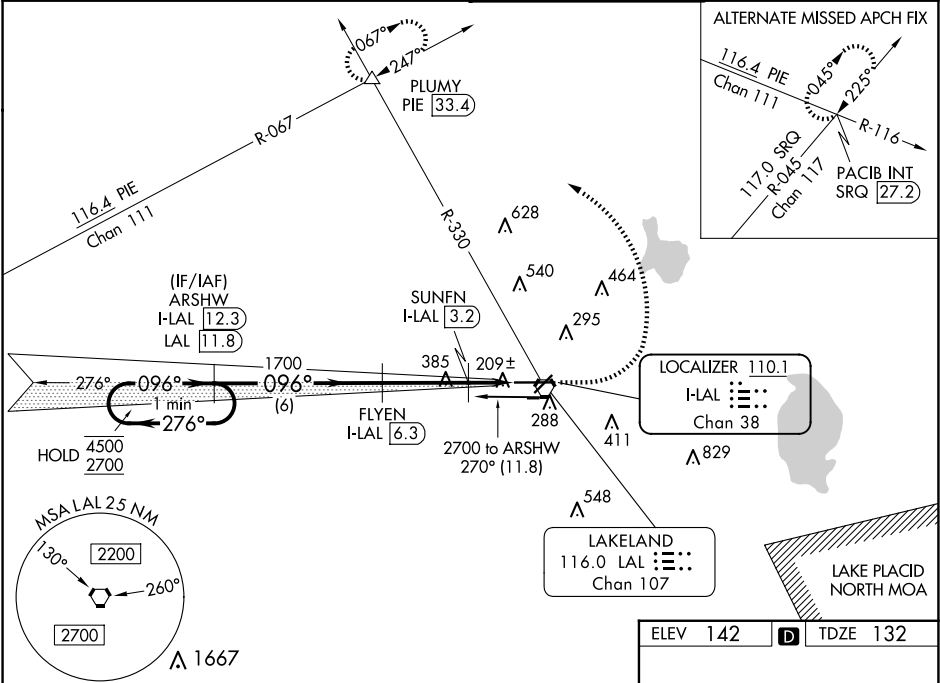


LOC/DME I-LAL 110.1 Chan 38	APP CRS 096°	Rwy Idg TDZE 132 Apt Elev 142
---	------------------------	---

ILS or LOC RWY 10
LAKELAND LINDER INTL (LAL)

DME required. Circling NA to Rwys 8 and 26.		ALSf-2 	MISSED APPROACH: Climb to 1000 then climbing left turn to 2000 on heading 292° and on LAL VORTAC R-330 to PLUMY INT/PIE 33.4 DME and hold.
ATIS 118.025	TAMPA APP CON 120.65 290.3	LAKELAND TOWER 124.5 236.775	GND CON 121.4



One Minute Holding Pattern VGSI and ILS glidepath not coincident (VGSI Angle 3.00/TCH 71). ARSHW I-LAL 12.3 FLYEN I-LAL 6.3 SUNFN I-LAL 3.2 I-LAL 2.4 I-LAL 1.6 Use I-LAL DME when on the localizer course. 6 NM 3.1 NM 0.9 NM 0.8 NM		1000 2000 hdg 292°	LAL R-330 △	PLUMY △
CATEGORY	A	B	C	D
S-ILS 10	332/18		200 (200-½)	
S-LOC 10	460/24		328 (400-½)	
CIRCLING	600-1 458 (500-1)	660-1 518 (600-1)	720-1½ 578 (600-1½)	840-2¼ 698 (700-2¼)
TDZ/CL Rwy 10 HIRL Rwys 5-23 and 10-28				