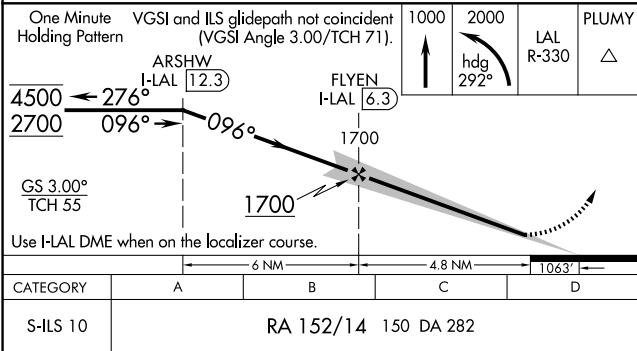
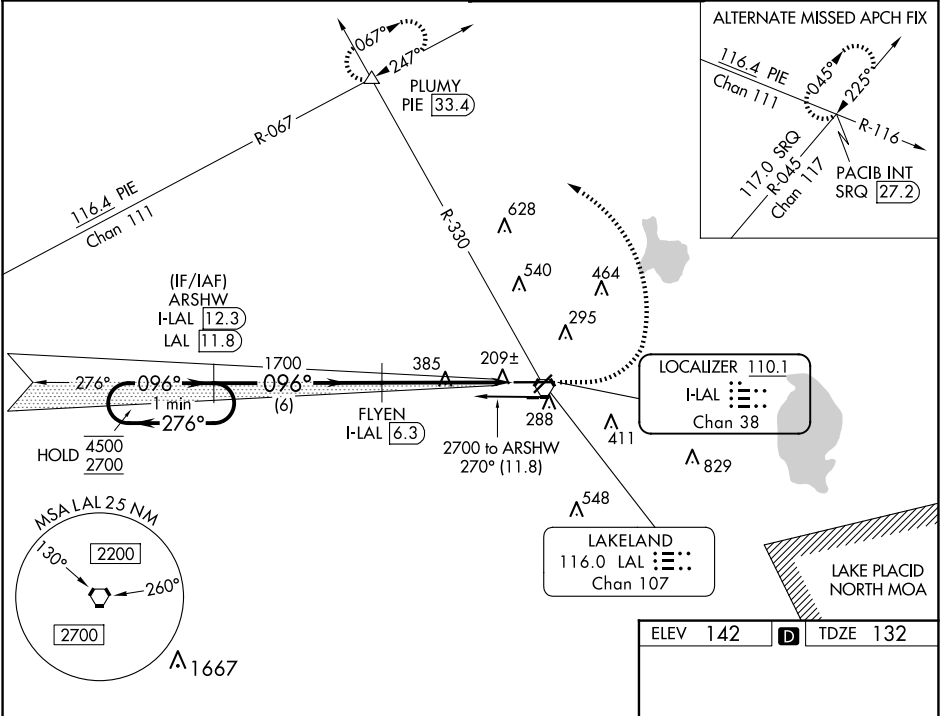


LOC/DME I-LAL 110.1 Chan 38	APP CRS 096°	Rwy Idg 8500 TDZE 132 Apt Elev 142
---	------------------------	---

ILS RWY 10 (SA CAT I)
LAKELAND LINDER INTL (LAL)

DME required. Requires specific OPSPEC, MSPEC, or LOA approval.	ALSF-2 	MISSED APPROACH: Climb to 1000 then climbing left turn to 2000 on heading 292° and on LAL VORTAC R-330 to PLUMY INT/PIE 33.4 DME and hold.
--	------------	--

ATIS 118.025	TAMPA APP CON 120.65 290.3	LAKELAND TOWER 124.5 236.775	GND CON 121.4
------------------------	--------------------------------------	--	-------------------------



CATEGORY	A	B	C	D
S-ILS 10	RA 152/14 150 DA 282			

