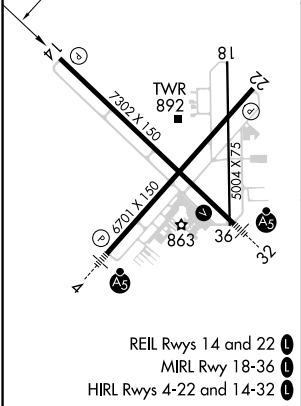
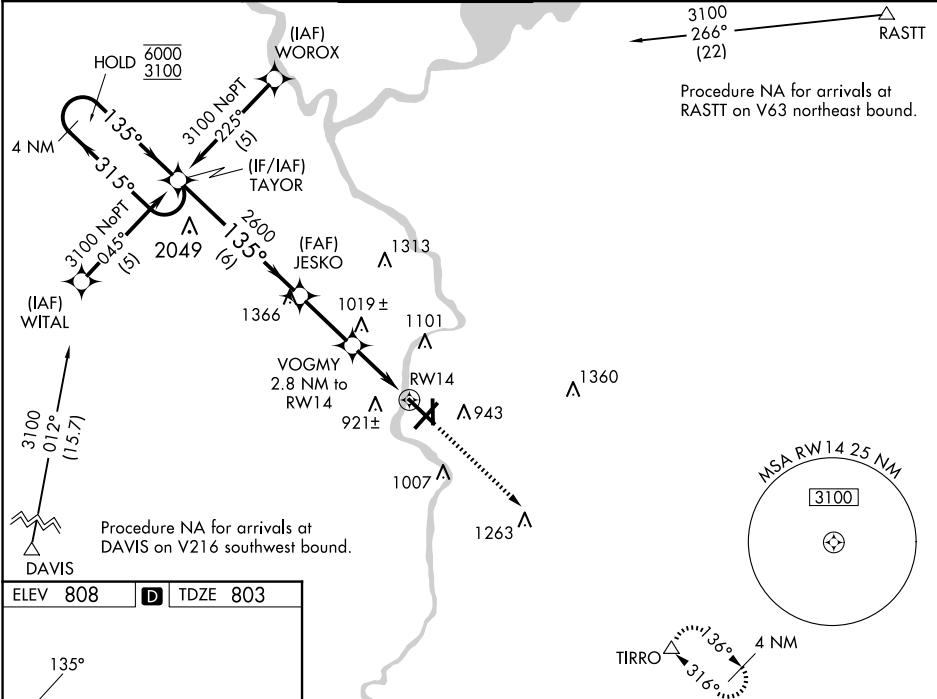


WAAS CH <b>86617</b> <b>W14A</b>	APP CRS <b>135°</b>	Rwy Idg TDZE <b>803</b> Apt Elev <b>808</b>
--	------------------------	---

RNAV (GPS) RWY 14  
SOUTHERN WISCONSIN RGNL (JVL)

RNP APCH-GPS.		MISSED APPROACH: Climb to 3100 direct TIRRO and hold.
<div><div><div>▼</div><div>▲</div></div></div> <div><p>Circling Rwy 18 NA at night. Baro-VNAV NA when using Rockford altimeter setting. For uncompensated Baro-VNAV systems, LNAV/VNAV NA below -16°C or above 47°C. VDP NA when using Rockford altimeter setting. When local altimeter setting not received, use Rockford altimeter setting and increase LPV DA to 1072 feet, LNAV/VNAV DA to 1291 feet, and all MDAs 80 feet; increase LPV all Cats visibility 1/8 SM, LNAV/VNAV all Cats visibility 1/4 SM, LNAV Cat C/D visibility 1/4 SM, and Circling Cat C/D visibility 1/4 SM.</p></div>		

ATIS <b>128.25</b>	ROCKFORD APP CON <b>121.0 327.0</b>	JANESVILLE TOWER ★ <b>118.8(CTAF) 225.4</b>	GND CON <b>121.65</b>	CLNC DEL <b>121.65</b>	UNICOM <b>122.95</b>
-----------------------	--	--	--------------------------	---------------------------	-------------------------



4 NM Holding Pattern TAYOR				3100	TIRRO
6000 ← 315°				↑	△
3100 → 135°				*LNAV only.	
GP 3.00° TCH 60					
6 NM					
2.6 NM					
1.5 NM					
1.3 NM					
CATEGORY	A	B	C	D	
LPV DA	1003-3/4		200 (200-3/4)		
LNAV/VNAV DA	1222-1 1/8		419 (500-1 1/8)		
LNAV MDA	1280-1	477 (500-1)	1280-1 3/8	1280-1 3/8	
			477 (500-1 3/8)	477 (500-1 3/8)	
CIRCLING	1280-1	1320-1	1420-1 3/4	1460-2	
	472 (500-1)	512 (600-1)	612 (700-1 3/4)	652 (700-2)	