

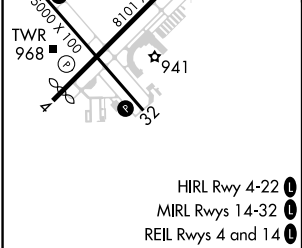
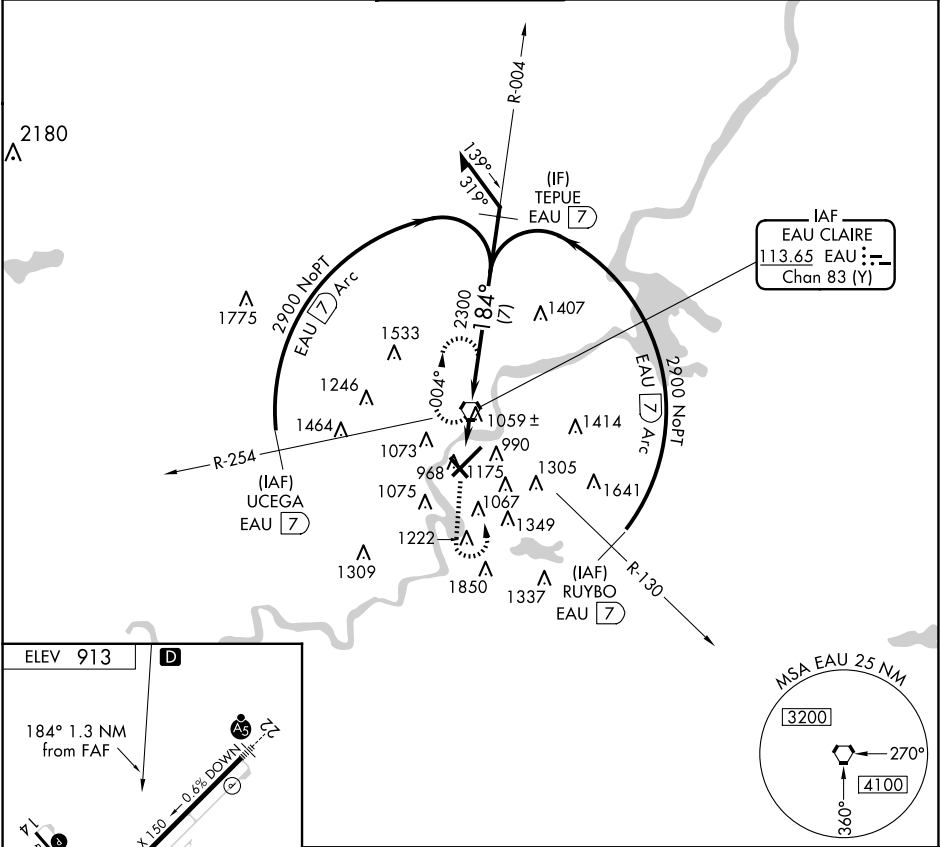
VORTAC EAU	APP CRS	Rwy ldg	N/A
<b>113.65</b>	<b>184°</b>	TDZE	N/A
Chan <b>83</b> (Y)		Apt Elev	<b>913</b>

VOR-A

CHIPPEWA VALLEY RGNL (EAU)

<div><div>▼</div><div>▲</div></div> <div>Visibility reduction by helicopters NA. When local altimeter setting not received, use Rice Lake altimeter setting and increase all MDA 120 feet, increase Circling Cat A and B visibility ¼ mile and Cat C visibility ½ mile.</div>	MISSED APPROACH: Climb to 2900 then left turn direct EAU VORTAC and hold.
---	---

ATIS <b>126.025</b>	MINNEAPOLIS CENTER <b>125.3 335.6</b>	EAU CLAIRE TOWER ★ <b>118.575 (CTAF) 0</b>	GND CON <b>120.925</b>	UNICOM <b>122.95</b>
------------------------	--	---	---------------------------	-------------------------



FAF to MAP 1.3 NM						CATEGORY	A	B	C	D
Knots	60	90	120	150	180	CIRCLING	1780-1 867 (900-1)	1780-1¼ 867 (900-1¼)	1780-2½ 867 (900-2½)	2200-3 1287 (1300-3)
Min:Sec	1:18	0:52	0:39	0:31	0:26					

EC-3, 07 AUG 2025 to 04 SEP 2025

EC-3, 07 AUG 2025 to 04 SEP 2025