

WAAS CH <b>87006</b> <b>W22A</b>	APP CRS <b>224°</b>	Rwy Idg TDZE Apt Elev	<b>7301</b> <b>913</b> <b>913</b>
--	------------------------	-----------------------------	---

RNAV (GPS) RWY 22  
CHIPPEWA VALLEY RGNL (EAU)

RNP APCH.

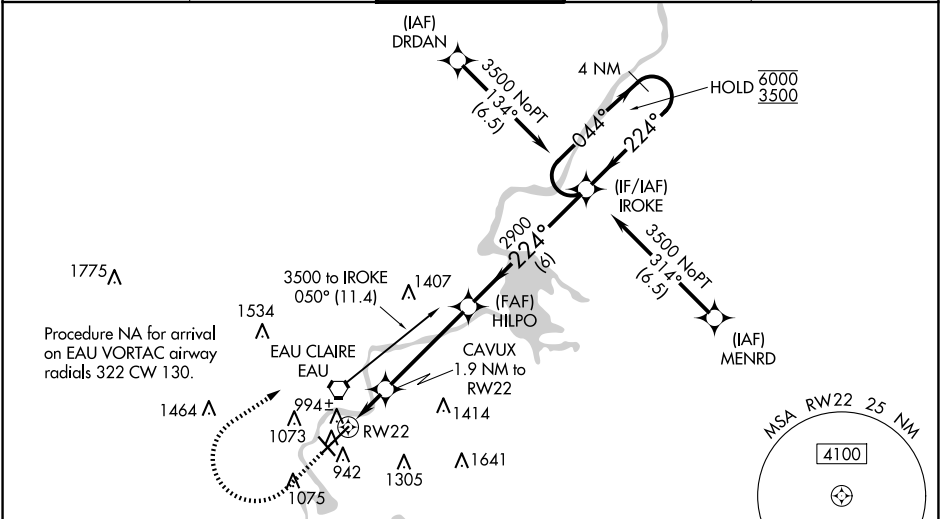
Baro-VNAV and VDP NA when using Rice Lake altimeter setting. For uncompensated Baro-VNAV systems, LNAV/VNAV NA below -20°C or above 54°C. When local altimeter setting not received, use Rice Lake altimeter setting and increase LPV DA to 1223, LNAV/VNAV DA to 1285, and increase LNAV/VNAV visibility all Cats ¼ SM; increase all MDA 120 feet and LNAV Cats C/D visibility ¾ SM and Circling Cat C visibility ¼ SM. For inop ALS increase LNAV/VNAV visibility all Cats to ¾ SM and LNAV Cats C/D visibility to 1 SM. For inop ALS when using Rice Lake altimeter setting increase LPV visibility all Cats to 1 SM and LNAV Cats C/D visibility to 1 ¾ SM.

MALS

AS

MISSED APPROACH:  
Climb to 1320 then climbing right turn to 3500 direct IROKE and hold.

ATIS <b>126.025</b>	MINNEAPOLIS CENTER <b>125.3 335.6</b>	EAU CLAIRE TOWER ★ <b>118.575 (CTAF) 0</b>	GND CON <b>120.925</b>	UNICOM <b>122.95</b>
------------------------	--	---	---------------------------	-------------------------



ELEV 913	TDZE 913
----------	----------

224° to RW22

3500 IROKE

\*LNAV only

CAVUX 1.9 NM to RW22

\*0.9 NM to RW22

RW22

\*1560

HILPO 2900

IROKE 4 NM Holding Pattern

044° → 6000 / 3500

← 224°

2900

GP 3.00° TCH 50

0.9 NM 1 NM 4.2 NM 6 NM

CATEGORY	A	B	C	D
LPV DA	1113-½ 200 (200-½)			
LNAV/VNAV DA	1175-½ 262 (300-½)			
LNAV MDA	1260-½ 347 (400-½)	1260-⅝ 347 (400-⅝)		
CIRCLING	1480-1 567 (600-1)	1540-1 627 (700-1)	1660-2¼ 747 (800-2¼)	2200-3 1287 (1300-3)